

# CONCERT PERCUSSION





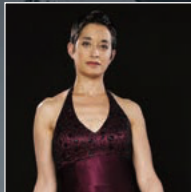
# WORLD CLASS PERCUSSIONISTS... WORLD CLASS PERCUSSION

Our artist roster of percussionists is made up of a diverse group that includes principal orchestral percussionists, ensemble percussionists, artists, clinicians and educators. Being able to work with such phenomenal talent is an honour for us. They give us an insight into what they need from their instruments and we develop our instruments to fulfil their needs. They inspire us to go beyond what we “know” we can do, and we help them to go further than they ever thought possible.

We all have a strong desire to expand our knowledge and skills. It's what keeps our artists in demand, and what makes our instruments the preferred choice of percussionists around the World.



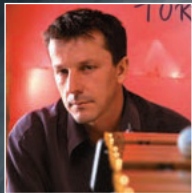
Keiko Abe



Simone Rebello



Mike Mainieri



Franck Tortiller



Altrid Maria-Sicking



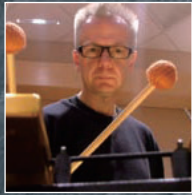
Victor Mendoza



Izabella Effenberg



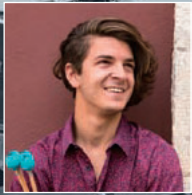
Pascal Schumacher



Anders Åstrand



Bart Quartier



Lucas Dorado

# JAZZ



Jacob Nissly  
(San Francisco Symphony)



Pablo Rieppi  
(New York City Ballet Orchestra)



Franz Schindlbeck  
(Berlin Philharmonic Orchestra)



Emmanuel curt  
(Orchestre national de france)



Neil Percy  
(London Symphony Orchestra)



Guido Marggarander  
(Bavarian Radio Symphony Orchestra)



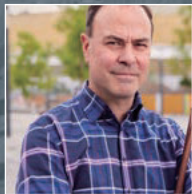
Don Liuzzi  
(The Philadelphia Orchestra)



Jauvon Gilliam  
(National Symphony Orchestra)



David Herbert  
(Chicago Symphony Orchestra)



Henrik M. Schmidt  
(Deutsches Symphonie-Orchester Berlin)



Franco Cardaropoli  
(Orchestra del Teatro S. Carlo)



Orchestra of the Royal Opera House Percussion Section

# ORCHESTRA



Ensemble Modern





Isao Nakamura



Federico Poli



Jean Geoffroy



Momoko Kamiya



Jörg Fabig



Theodor Milkov



Johannes Fischer



Ney Rosauro



Pius Cheung



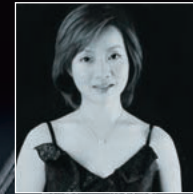
Ria Ideta



Radoslaw Szarek



Armando Lorente



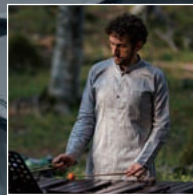
Tsuey-Ying Tai



Raphael Christen



Guy Frisch



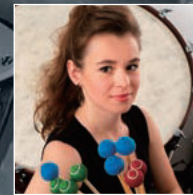
Simone Beneventi



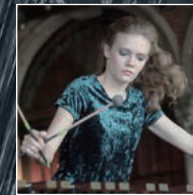
Le Yu



Leonie Klein



Marianna Bednarska



Adelaïde Ferrière



Arjan Jongsma

# SOLOIST



Nozomi Hiwatashi



Calum Huggan

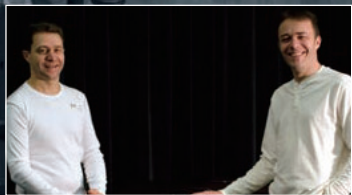


Anders Kann Elten



David Panzl

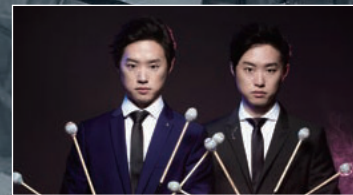
# ENSEMBLE



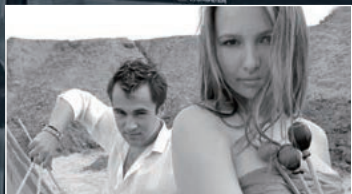
PercuDuo



Elbtoneal Percussion



Twincussion Duo



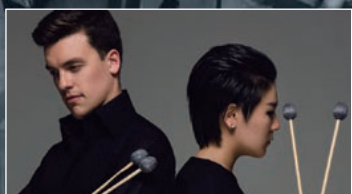
Axoum Duo



TCHIKI duo



Lucid Duo



Double Beats



Minh-Tâm NGUYEN, Percussions de Strasbourg

## CONTENTS

- MARIMBAS ..... page 4
- XYLOPHONES ..... page 9
- VIBRAPHONES ..... page 10
- GLOCKENSPIELS ..... page 13
- CHIMES ..... page 14
- KEYBOARD MALLETS ..... page 17
- TIMPANI ..... page 20
- BASS DRUMS ..... page 22
- CONCERT TOMS ..... page 24
- SNARE DRUMS ..... page 25
- FIELD DRUMS ..... page 27



# MARIMBAS

Legendary marimbist Keiko Abe has been collaborating with Yamaha for over 40 years. The culmination of this alliance is embodied in the YM6100 Concert Grand Marimba, a five-octave instrument that represents the ultimate in design, construction, and materials. This impressive marimba features carefully aged and specially selected Rosewood bars cut and tuned by hand, a beautifully crafted, sturdy frame, and exclusive pneumatic height adjustment system.



## YM6100

Range: 5 octaves, C-c4  
 Bars: Rosewood  
 Bar sizes: 80-41 mm Wide, 25-20 mm Thick  
 Pitch: A=442Hz (other pitches available by special order)  
 Resonators: Round, adjustable from C16 to F33  
 Height adjustment: Gas spring support system 88-103 cm  
 Dimensions (WxD): 272x116 cm  
 Weight: 107 kg

### Scale Range





YM6100 is the result of more than 40 years of collaboration between the legendary marimbist Keiko Abe and Yamaha's designers.



**Rosewood Bars**

Only the most select, top-grade rosewood is used for the YM6100. Yamaha has developed a unique tuning system to ensure accurate intonation and matched tone.



**Height Adjustment**

The unique compressed gas spring support system allows quick and easy height adjustment by a single person. This is especially useful in schools or ensembles where more than one musician will use the same instrument.



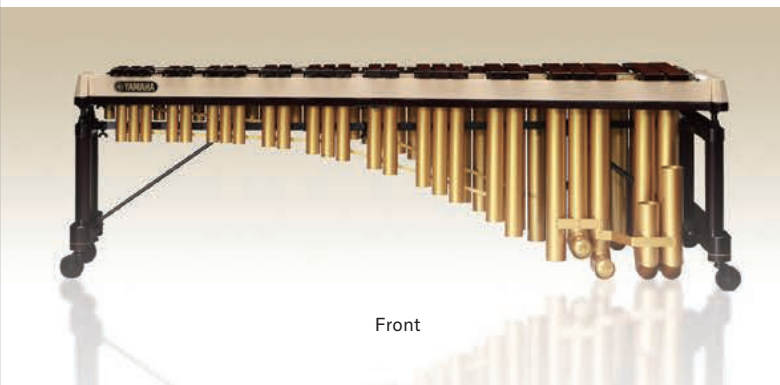
**Resonators**

The resonators on the lower end are adjustable, allowing a well-focused and balanced tone when changes in temperature and humidity occur. You can adjust them quite easily as the resonator tubes face outward allowing for easy access.



**Portability**

The lightweight frames are designed to make transport as easy as possible and can be quickly dismantled and reassembled.



Front

# MARIMBAS

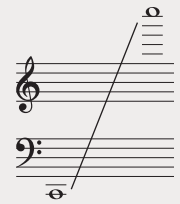
Years of research and development with top artists from around the globe has led to advancements in tuning, bar design, and frame construction that make our marimbas the most sought after in the world. Four models ranging from the YM5100A to the YM4600A offer many of the features found on the YM6100. Crafted using the finest materials with the best of traditional and modern techniques they deliver rich glowing tone and perfect intonation.



## YM5100A

Range: C-c4, 5 octaves  
Bars: Rosewood

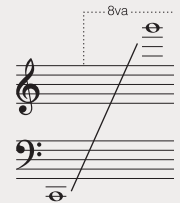
Scale Range



## YM5104A

**SPECIAL ORDER**  
Range: C-g4, 5 1/2 octaves  
Bars: Rosewood

Scale Range



### Easy Height Adjustment

The unique compressed gas spring support system allows quick and easy height adjustment by a single person. This is especially useful in schools or ensembles where more than one musician will use the same instrument.



### Portability

The frames have been superbly crafted of beautiful natural-finish wood and strong lightweight metal. They are designed to make transport as easy as possible and can be quickly dismantled and reassembled. The 'one-piece' design resonators fold in the middle for easy packing or assembly. And the streamlined end pieces with 4 (100 mm) casters permit smooth maneuvering through doorways.





### YM4900A

Range: F-c4, 4 1/2 octaves  
Bars: Rosewood

Scale Range



Scale Range

### YM4600A

Range: A-c4, 4 1/3 octaves  
Bars: Rosewood

Scale Range



YM2400R

### YM2400R

Range: A-c4, 4 1/3 octaves  
Bars: Rosewood

Scale Range



### YM2400

Range: A-c4, 4 1/3 octaves  
Bars: Acoustalon

Scale Range



## ACOUSTALON

Acoustalon™ is an artificial wood that offers a rich, beautiful sound that is incredibly close to natural rosewood. Made of FRP (Fiber Reinforced Plastic), this revolutionary material is unaffected by changes in temperature or humidity, and is much less prone to damage. Marimbas and xylophones that feature Acoustalon™ are ideal for use in school environments where instruments are subject to heavy use.



Models	Bar Size	Bar Thickness	Pitch	Resonator	W x D x H	Weight
YM5100A	41-72 mm	20-24 mm	A=442Hz	Helmholz (C to F)	261 x 103 x 86-101 cm	96 kg
YM5104A	38-72 mm			Round cornered rectangle (F#-A#)	281 x 103 x 86-101 cm	99 kg
YM4900A	41-65 mm			Helmholz (F), Round cornered rectangle (F#-A#)	235 x 96 x 86-101 cm	78 kg
YM4600A	41-65 mm	21-25mm	A=442Hz	Round	219 x 91 x 86-101 cm	68 kg
YM2400R	38-58 mm			—	198 x 88 x 89-97 cm	55 kg
YM2400	38-58 mm	23 mm				61kg

# MARIMBAS



## YM410

Range: c-c4, 4 octaves  
Bars: Rosewood

### Scale Range



The YM1430 and the YM40 marimba have tone bars made of select padauk which offers an ideal balance between tone and price for the budget conscious. It features a reinforced frame and a unique adjustable height system, perfect for the younger percussionist.



## YM1430

Range: A-c4, 4 1/3 octaves  
Bars: Padauk

### Scale Range



## YM40

Range: c-f3, 3 1/2 octaves  
Bars: Padauk

### Scale Range



Models	Bar Size	Bar Thickness	Pitch	W x D x H	Weight
YM2400R	38-58 mm	21-25mm	A=442Hz	198 x 88 x 89-97 cm	55 kg
YM2400		23 mm			61kg
YM410		21-25 mm		188 x 84 x 76-88 cm	49 kg
YM1430		22.5-24 mm		188 x 84 x 88-98 cm	
YM40	40-53 mm	22.5-24.5 mm		154 x 80 x 82-94 cm	39 kg



# XYLOPHONES

Yamaha's xylophone lineup offers a selection of tone bar materials that fit a variety of performance requirements. Tone bars hand crafted from the finest rosewood offer beautiful tone and superior projection. Yamaha's original Acoustalon delivers a tone remarkably close to rosewood from an artificial wood that is highly durable and little affected by changes in temperature or humidity. Padauk offers superb tonal clarity and resonance at an affordable price.



YX500R



**YX500R**  
Range: f1-c5, 3 1/2 octaves  
Bars: Rosewood

**YX500F**  
Range: f1-c5, 3 1/2 octaves  
Bars: Acoustalon

**Scale Range**

Xylophones sound one octave higher than the written notation. \*(Actual notation)

**YX135**  
Range: f1-c5, 3 1/2 octaves  
Bars: Padauk

**Scale Range**

Xylophones sound one octave higher than the written notation. \*(Actual notation)



**YX35G**  
Range: c1-f4, 3 1/2 octaves  
Bars: Padauk  
Mallets (ME102) & dust cover included

**Scale Range**

Xylophones sound one octave higher than the written notation. \*(Actual notation)



**YX30G**  
Range: c2-c5, 3 octaves  
Bars: Padauk  
Mallets (ME102) & dust cover included

**Scale Range**

Xylophones sound one octave higher than the written notation. \*(Actual notation)

Models	Bar Size	Bar Thickness	Pitch	W x D x H	Weight
YX500R	40 mm	23 mm	A=442Hz	138 x 75 x 80-95 cm	35 kg
YX500F	38 mm				38 kg
YX135	34 mm	17.5 mm		123 x 62 x 87 cm	22 kg
YX35G				120 x 66 x 82 cm	21 kg
YX30G			106 x 55 x 82 cm	17 kg	

# VIBRAPHONES

Using a special aluminum alloy developed by our metallurgists allows our vibes to respond well at low dynamics without distorting at high volume levels. A specialized tuning method delivers a pure fundamental with solid, full tone and projection. These world-class instruments offer the vibist beautiful tone supported by practical designs.



## YV4110(M)

Range: c-c4, 4 octaves  
 Bars: Gold mirror finish aluminium alloy (YV4110)  
 Gold satin finish aluminum alloy(YV4110M)

### Scale Range



## YV3910(M)

Range: c-f3, 3 1/2 octaves  
 Bars: Gold mirror finish aluminium alloy (YV3910)  
 Gold satin finish aluminum alloy(YV3910M)

### Scale Range



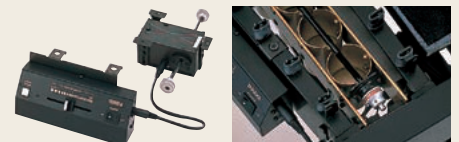
## YV3710(M)

Range: f-f3, 3 octaves  
 Bars: Gold mirror finish aluminium alloy (YV3710)  
 Gold satin finish aluminum alloy(YV3710M)

### Scale Range



All Yamaha vibes feature a compact fan motor and pulley system. A silent pause and slider control provides quiet operation and exceptional musical expression. The YVM300 motor is equipped with our exclusive memory system that returns the fans to a pre-determined position regardless of where the fans are when the pause button is pressed.







YV2700

The YV2700 is available with gold resonators and glossy gold bars for a bright, projecting sound (YV2700G), and with silver resonators and silver satin finish bars for a mellower, focused sound (YV2700). A height-adjustable frame with dual, parallel crossbars ensures stability during play and transport.

### YV2700(G)

Range: f-f3, 3 octaves  
 Bars: Gold mirror finish aluminum alloy (YV2700G)  
 Silver satin finish aluminum alloy (YV2700)

#### Scale Range



YV2700G



The YV3030MS is positioned between the student and high-end market segments, offering performance that will satisfy a broad spectrum of users from junior high school and high school students to advanced players.

### YV3030MS

Range: f-f3, 3 octaves  
 Bars: Matte silver finish aluminum alloy

#### Scale Range



## VIBRAPHONE VARIABLE-SPEED DRIVER

### YVD20



#### Pause Memory

The YVD20 includes a Pause Memory function that was previously only available on high-end models. The fans always stop at the memorized position when paused for non-vibrato playing, ensuring that consistent volume is maintained even when the driver is stopped and started multiple times.

\* Volume is reduced when the fans are stopped in the closed position.

#### Quieter Operation

Motor noise has been reduced by approximately 25% compared to previous models.

\* Measured at 145 rpm.

**Notes** The YVD20 is not included with the YV3030MS. Please purchase the YVD20 and dedicated power adapter separately if required.

Models	Bar Size	Bar Thickness	Pitch	Motor	W x D x H	Weight
YV4110(M)	39-57 mm	13 mm	A=442Hz	YVM 300 Pause-memory controller (25-150rpm)	185 x 83 x 86-94 cm	65 kg
YV3910(M)					164 x 83 x 86-94 cm	61 kg
YV3710(M)					143 x 82 x 86-94 cm	58 kg
YV2700(G)				YVM 200 Pause controller (25-150rpm)	143 x 82 x 81-89 cm	52 kg
YV3030MS	39 mm			YVD20 (sold separately)	127 x 74 x 66-85 cm	35 kg

# VIBRAPHONE/METALLOPHONE

The gas spring height adjustment system previously used in our high-end keyboard percussion instruments is now provided in our educational models, allowing students of any height and physique to play in ideal posture with simple operation. The sound bars are made of the same material as those used in Yamaha celestas, producing a soft, warm tone that is ideal for ensemble playing. The vibraphone variable-speed driver unit has been refined for quieter operation, so that players can concentrate more fully on their performance.

## VIBRAPHONE



### YV2030MS

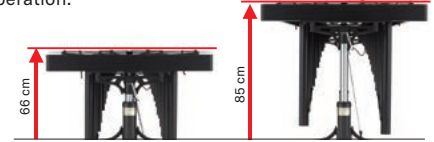
Range: f-f3, 3 octaves  
 Bars: Silver satin finish aluminum alloy  
 Mallets (ME-303) & dust cover included

#### Scale Range



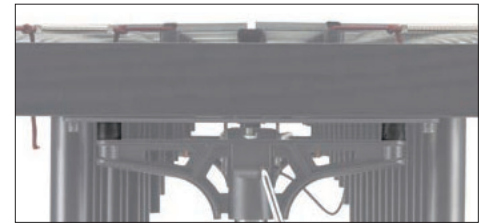
### Gas Spring Height Adjustment

The gas spring height adjustment system previously used only in our high-end keyboard percussion instruments is now provided in our educational models as well, allowing students of any height and physique to play in ideal posture with simple operation.



### Vibration-damping Rubber Joints Below Side Frame (JP Patent 6579130)

These components make height adjustment easier by eliminating the need to maintain instrument level while adjusting height (with the previous models, care was required to keep the instrument level while adjusting its height). The vibration-damping rubber also reduces floor noise that can occur when the instrument is played.



## VIBRAPHONE VARIABLE-SPEED DRIVER

### YVD10



#### Quieter Operation

Motor noise has been reduced by approximately 25% compared to previous models.  
 \* Measured at 145 rpm.

#### Compact Controller

The controller unit features a new compact design that does not extend past the tone bars. This means that the controller will not get in the way when playing the instrument with a bow, for example.

**Notes** The YVD10 is not included with the YV2030MS. Please purchase the YVD10 and dedicated power adapter separately if required.

### Tone Bar Material

The tone bars in the new models are made of the same aluminum alloy that is used in Yamaha celestas. The new tone bars produce a soft, warm tone that blends beautifully with other instruments in ensembles.



## METALLOPHONE



### YT2030MS

Range: c1-c4, 3 octaves  
 Bars: Silver satin finish aluminum alloy  
 Mallets (ME303) & dust cover included

#### Scale Range



### Damper Belt

In the previous models the damper and damper pedal were linked by a metal rod that could be accidentally bent if a user attempted to adjust the instrument's height without first loosening the rod's wing bolts. In the new models the metal rod has been replaced by a belt that eliminates this problem. And since the wing bolts are replaced by a buckle, there is no chance that they will be misplaced or lost. The use of a belt also means that slippage cannot occur when the damper pedal is pressed.



Models	Bar Size	Bar Thickness	Pitch	W x D x H	Weight
YV2030MS	32 mm	10.3 mm	A = 442 Hz	110 x 74 x 66-85 cm	31 kg
YT2030MS					28 kg



# GLOCKENSPIELS

Yamaha glockenspiel tone bars are made of high carbon steel and treated with a special tempering process to produce a bright pure tone. The bars are mounted on the frame using either a suspension cord system (YG2500) or nodal point support string with single pin bar mounting (YG1210, YG250D) to increase sustain and maximize resonance. The YG2500 features a pedal dampening system and built-in frame with gas spring assisted height adjustment.



Stand:YPS200

## YG2500

Range: c2-e5, 3 1/2 octaves  
Bars: High carbon steel

### Scale Range

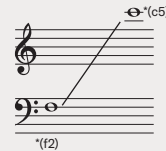


Glockenspiels sound two octave higher than the written notation.  
\*Actual notation

## YG1210

Range: f2-c5, 2 1/2 octaves  
Bars: High-carbon steel  
Case cover: Removable  
Frame: Removable from case  
Mallets & Case included

### Scale Range



Glockenspiels sound two octave higher than the written notation.  
\*Actual notation



## YG250D

Range: f2-c5, 2 1/2 octaves  
Bars: High-carbon steel  
Case cover: Removable  
Frame: Fixed in case  
Mallets & Case included

### Scale Range



Glockenspiels sound two octave higher than the written notation.  
\*Actual notation



**Nodal Point Support String**  
YG1210 and YG250D utilize nodal point support string to minimize the contact with the tone bar. In combination with single pin bar mounting, this system affords excellent sustain, purity of tone and superb resonance from the bars.

# KEYBOARD PERCUSSION STANDS



## YPS200

Height adjustment range: 735-1095 mm  
Table dimensions (WxDxH):  
836x546x38 mm  
Interior table dimensions (WxD):  
810x520 mm



## YGS70

Height (Width):  
570 (750)-830 (450) mm

Models	Bar Size	Bar Thickness	Pitch	W x L x H	Weight
YG2500	32.5 mm	9 mm	A=442Hz	106 x 56 x 85-105 cm	36 kg
YG1210	31 mm	7.8 mm		79 x 48 x 11 cm	15.7 kg (case included)
YG250D	30 mm	5 mm		73 x 46 x 8 cm	9.3 kg (case included)

# CHIMES

The YCH series has been designed to provide magnificent orchestral embellishment. Based on in-depth acoustic analysis, the chime tubes have been completely redesigned to deliver rich fundamental tones and luxurious sustain. A refreshed visual design echoes the refined elegance of Yamaha grand pianos, presenting a visually appealing form when viewed from any angle.

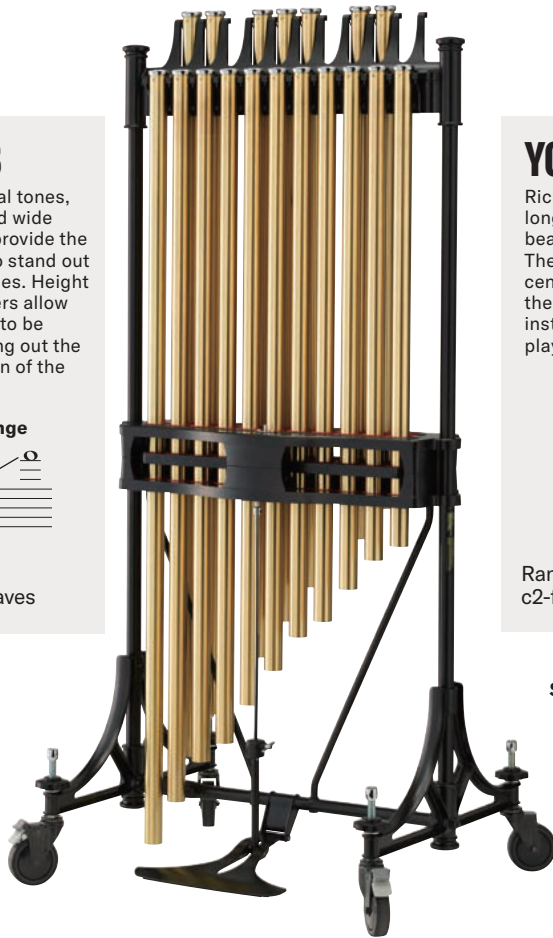
## YCH7018

Rich fundamental tones, long sustain, and wide dynamic range provide the power needed to stand out in large ensembles. Height adjustable casters allow damper contact to be optimized to bring out the maximum sustain of the chime tubes.

### Scale Range



Range: c2-f3, 1 1/2 octaves



## YCH6018

Rich fundamental tones, long sustain, and a beautiful, clear sound. The playing position is 10 centimeters lower than the YCH7018, making this instrument ideal for players of smaller stature.

### Scale Range



Range: c2-f3, 1 1/2 octaves



### Scale Range

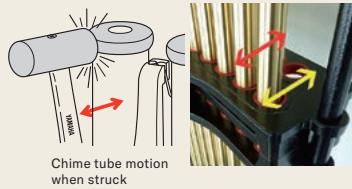
### Head Cap

The new head cap design provides a wider sweet spot so it is easier to produce optimum tone. The head caps are silver colored, contrasting nicely with the gold-colored tubes for easier visual reference.



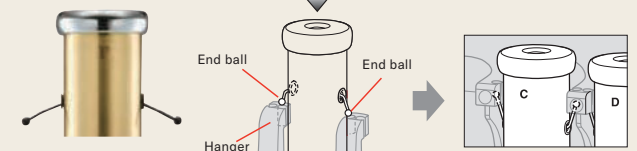
### Damper Function

By aligning damper movement with the front-to-back motion of the chime tubes when struck, damping response has been notably improved. It is now easier to stop the extended sustain of the redesigned chime tubes at the most musically appropriate time.



### Chime Tube Wire Suspension System (JP Patent 6635300)

The YCH series features a new system with wires that have ball ends that simply hook into slots on the hanger, making it much quicker and easier to hang the tubes. It is easy to achieve perfectly horizontal chime tube alignment for optimum playability. No tools are required for wire replacement.

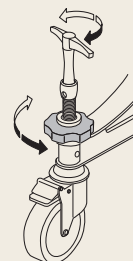
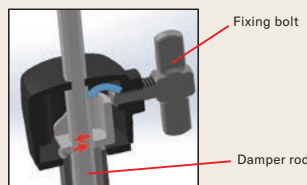
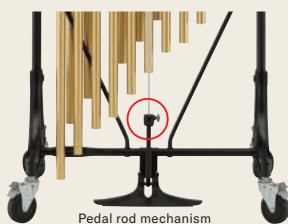


### Castors

A swivel prevention function has been added to the caster locks. Furthermore, the YCH7018 now features height-adjustable casters. If the chime tubes are not properly centered in the damper they can touch the damper felt, reducing sustain and deadening the tone. Adjustable-height casters make it easy to level the instrument so that the chime tubes hang away from the damper felt.

### Damper Rod Clamp System (JP Patent 6540737 / U.S. Patent 104887976)

The damper rod clamp system has been redesigned for greater clamping strength and a more secure hold that prevents slippage when the damper pedal is pressed.





## CHIME STANDS

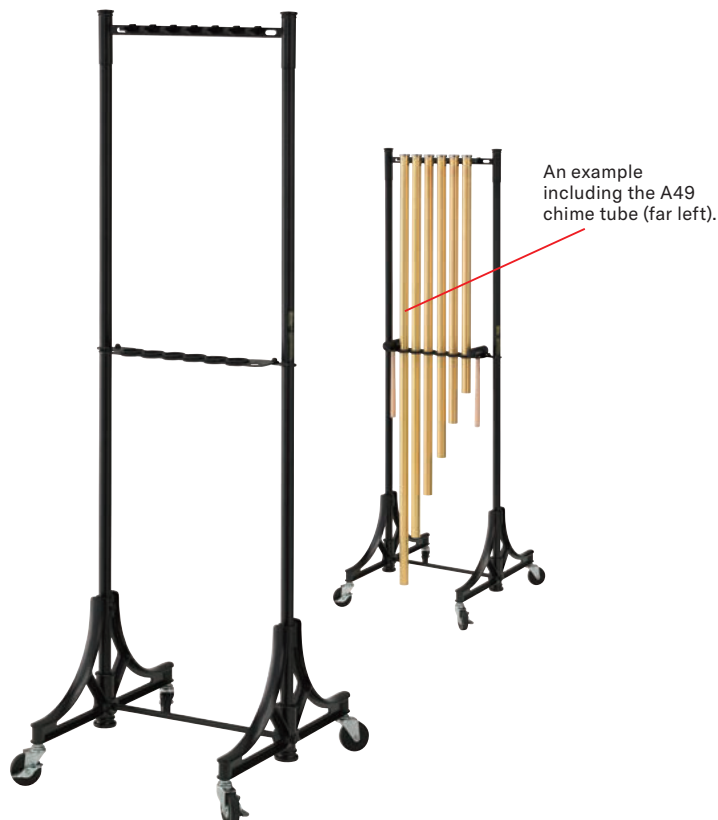
### YCHS7018

Dedicated stand for the YCHT7000 series.



### YCHS7006

A six-tube stand that can be used to hang only the chime tubes needed for specific performances. This stand also accommodates special-order chime tubes, right down the lowest A49 tube.



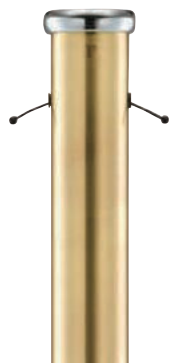
Models	Tube diameter	W x D x H	Pitch	Height adjustment	Weight	Supplied accessories
YCH7018	38.1 mm / 1-1/2"	81 x 71 x 177-181 cm	A = 442 Hz	○	85 kg	Dust cover 1p / YCHM38P 2p
YCH6018	31.8 mm / 1-1/4"	81 x 71 x 167 cm		—	63 kg	
YCHS7018	—	81 x 71 x 175-179 cm	—	○	30 kg	—
YCHS7006	—	56 x 68 x 181 cm		—	15 kg	

## TUBES (COLUMNS)

### YCHT7000 Series

Chime tubes from A49 through G71 for the YCH7018 can be purchased individually.

\* A49, A#50, B51, F#70, and G71 are available by special order.



	Models
*Special order	YCHT7049A
	YCHT7050A#
Standard	YCHT7051B
	YCHT7052C
	YCHT7053C#
	YCHT7054D
	YCHT7055D#
	YCHT7056E
	YCHT7057F
	YCHT7058F#
	YCHT7059G
	YCHT7060G#
	YCHT7061A
	YCHT7062A#
	YCHT7063B
	YCHT7064C
	YCHT7065C#
	YCHT7066D
	YCHT7067D#
	YCHT7068E
YCHT7069F	
*Special order	YCHT7070F#
	YCHT7071G

### Some Compositions that Include Chimes

Composition	Composer	Chime Range
And the mountains rising nowhere	Joseph Schwantner	C52-F69
Carmina Burana	Carl Orff	F57-F69
Danse Folâtre	Claude Thomas Smith	C52-F69
Festival Variations	Claude Thomas Smith	E56-F69
Háry János	Kodály Zoltán	A#50-A#63
Lincolnshire Posy	Percy Aldridge Grainger	D54-F69
Peterloo Overture	Malcolm Henry Arnold	E56-D66
Pictures at an Exhibition X. La Grand Porte de Kiev (Orch. Ravel)	Modest Petrovich Mussorgsky	E56
Roman Festivals	Ottorino Respighi	A#50,A#63
St. Anthony Variations	William H Hill	F57-F69
Symphony No.3 in D Minor No.5	Gustav Mahler	A#50-A61
Symphonie Fantastique, Op.14	Louis Hector Berlioz	G59,C64

## CHIME Mallet

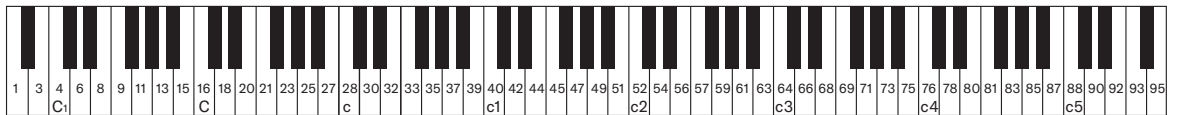
### YCHM38P

The chime mallet supplied with the YCH7018 and YCH6018 can also be purchased separately.



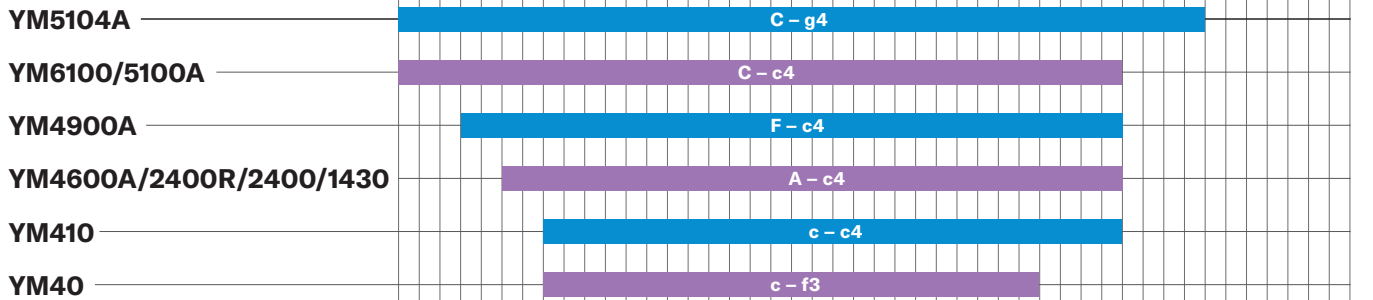
Model	W x L	Head material	Shaft material
YCHM38P	115 x 314 mm	POM	Maple

# SCALE RANGE

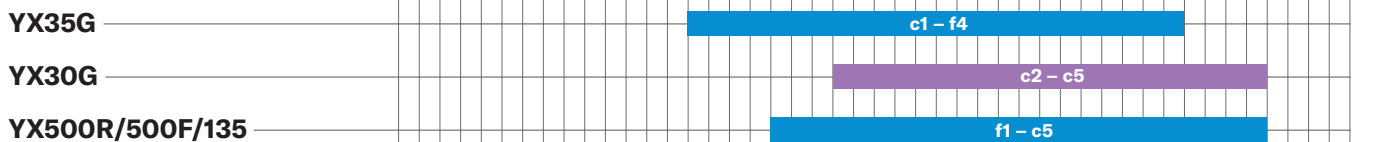


## Middle C

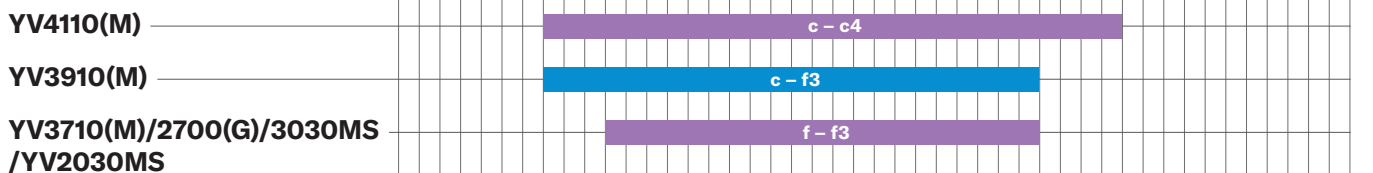
### MARIMBAS



### XYLOPHONES



### VIBRAPHONES



### METALLOPHONE



### GLOCKENSPIELS



### CHIMES





# KEYBOARD MALLET HEADS

## Yamaha Mallet Heads

### Hard Rubber

Rubber heads work well on a wide variety of instruments. They range from very hard—well suited for glockenspiels and xylophones—to softer heads which can be used on marimbas.

### Hytrel®, Lexan®, ABS

These extremely hard materials are excellent for use on glockenspiels and xylophones. A wide variety of sounds can be obtained depending on size and the material used. Lexan produces a heavier, harder sound. ABS is lighter and bright. Hytrel has a soft, pure, well centered sound.

### Brass

Brass heads are mainly for use on glockenspiels. When a bright, clear, metallic tone is desired, brass can be a perfect choice.

### Ebonite with Brass Core (MR840)


For use on glockenspiel only. This mallet has a large, heavy brass core for a strong sound that projects well.



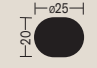
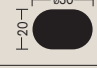


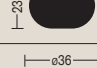

### Yarn

Yarn wound heads produce a pleasingly mellow tone which is excellent for use on marimbas. These mallets are also effective for use on xylophones and vibraphones.

### Cord

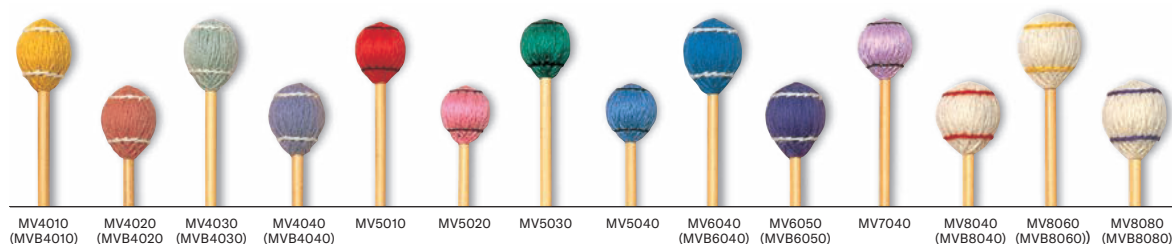
Harder than yarn, cord wound heads produce a brighter tone. Excellent for articulating passages with precision and clarity.

<b>EX</b>	Extra Hard	<b>Hard</b>  <b>Soft</b>
<b>VH</b>	Very Hard	
<b>H</b>	Hard	
<b>MH</b>	Medium Hard	
<b>MS</b>	Medium Soft	
<b>S</b>	Soft	
<b>VS</b>	Very Soft	
<b>ES</b>	Extra Soft	

Core Size (mm)										
	ME101	ME102	ME103	ME104	ME105					
		ME201 ME301		ME202 ME302	ME203 ME303				ME204 ME304	
	MR1100 MR2000	MR1105 MR2005	MR1110 MR2010	MR1120 MR2020	MR1130 MR20301				MR1140 MR2040	
			MR3000	MR3010	MR3020	MR3030	MR3040			
	MV4000H	MV4000S	MV4010 MV5010	MV4020 MV5020	MV4030 MV5030	MV4040 MV5040				
						MV6040 MV7040			MV6050	
							MV8040		MV8060	MV8080

## PROFESSIONAL MODELS

Mallets found in our professional models have been carefully designed with specific weights and special characteristics that allow the player to draw substantial tone from the instrument. The core on our two-tone models is wrapped with a special rubber porous with air, which results in an obvious change in tone when going between a hard-hitting forte and delicate piano. Every mallet in the series is carefully made by hand to guarantee the very highest level of quality. Yarn wound models are available with either rattan or birch shafts.



### Rattan Shaft Models

Models	Head			Shaft	Length	Recommended			
	Material	Hardness	Core size			Glockenspiel	Vibraphone	Xylophone	Marimba
MV4010	Yarn Wound	H	ø30x23mm	Rattan	400mm		✓		✓
MV4020		MH					✓		✓
MV4030		MS					✓		✓
MV4040		S	ø33x23mm				✓		✓
MV6040		VS							✓
MV6050		MS	ø36x23mm						✓
MV8040		VS							✓
MV8060		ES							✓
MV8080									✓
MV5010		Cord Wound	H			ø30x23mm			✓
MV5020	MH			✓			✓		
MV5030	MS			✓			✓		
MV5040	S			✓			✓		
MV7040					✓			✓	

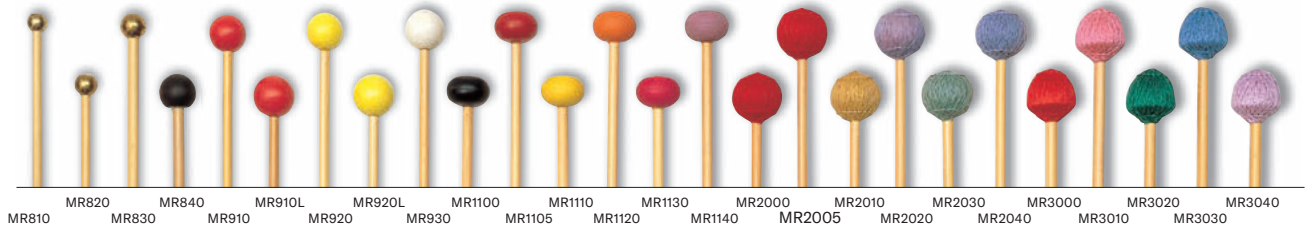
EH: Extra Hard VH: Very Hard H: Hard MH: Medium Hard M: Medium MS: Medium Soft S: Soft VS: Very Soft ES: Extra Soft

# KEYBOARD MALLETS

## REGULAR MODELS

Covering a wide range of styles, Yamaha's Regular series mallets possess a handmade quality similar to our Virtuoso line.

Regular model mallets are lighter in weight for enhanced endurance, yet can produce a solid rich tone.



Models	Head			Shaft	Length	Recommended				
	Material	Hardness	Core size			Glockenspiel	Vibes	Xylophone	Marimba	
MR810	Brass	EH	ø14mm	Rattan	320mm	✓	✓		✓	
MR820			ø16mm			✓				
MR830			ø18mm			✓				
MR840	Ebonite (Brass Core)	VH	ø25mm		300mm	✓				
MR910	Lexan (Medium)	EH	ø28mm		370mm	✓		✓		
MR910L	Lexan (Large)					✓	✓			
MR920	ABS (Medium)	VH	ø25mm			✓		✓		
MR920L	ABS (Large)					✓	✓			
MR930	Hytrell	H	ø30x20mm			✓		✓		
MR1100	Hard Rubber	EH				✓				
MR1105		VH			✓					
MR1110		H							✓	
MR1120		MH							✓	
MR1130		MS							✓	
MR1140		S							✓	
MR2000		Yarn Wound (Round Head)			EH	ø30.7x19mm	✓		✓	✓
MR2005					VH				✓	✓
MR2010					H				✓	✓
MR2020			MH				✓	✓	✓	
MR2030	MS				✓		✓	✓		
MR2040	S				✓		✓	✓		
MR3000	Cord Wound (Mushroom Head)	VH	ø30.7x19mm	✓		✓	✓			
MR3010		H				✓	✓	✓		
MR3020		MH				✓	✓	✓		
MR3030		MS				✓	✓	✓		
MR3040		S				✓	✓	✓		

EH: Extra Hard VH: Very Hard H: Hard MH: Medium Hard M: Medium MS: Medium Soft S: Soft VS: Very Soft ES: Extra Soft

## EDUCATIONAL MODELS

Designed especially for students, the Educational series provides an ideal combination of weight and balance perfectly suited for younger players. The hollow shafts are of flexible, durable FRP with a non-slip finish.

FRP: Fiber Reinforced Plastic



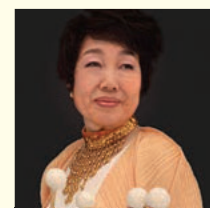
Models	Head			Shaft	Length	Recommended				
	Material	Hardness	Core size			Glockenspiel	Vibes	Xylophone	Marimba	
ME10W	Hytrell (Dual Head)	H&S	ø20 mm	FRP	345 mm	✓		✓		
ME101	Rubber	VH	ø25 mm		375 mm	✓		✓		
ME102		H						✓	✓	
ME103		MH							✓	✓
ME104		MS							✓	✓
ME105		S								✓
ME201	Yarn Wound	H	ø25x20 mm		385 mm				✓	
ME202		MH								✓
ME203		MS								✓
ME204		S								✓
ME301	Cord Wound	H	ø25x20 mm		385 mm		✓			
ME302		MH						✓		
ME303		MS						✓		
ME304		S					✓			

ME10W (Dual Head Model) Blue (Hard) White (Soft) EH: Extra Hard VH: Very Hard H: Hard MH: Medium Hard M: Medium MS: Medium Soft S: Soft VS: Very Soft ES: Extra Soft



# KEIKO ABE SIGNATURE MODELS

Designed in close collaboration with Keiko Abe, her Signature Series Mallets are designed to draw out the most from both the performer's technique and tone from the instrument in compositions that require exceptional technique. Ideal for advanced players, these mallets are much heavier than regular mallets. This causes the marimba's tone bars to resonate fully creating a sound that has been up until now, difficult to obtain.



MKA01 MKA02 MKA03 MKA04 MKA05 MKA06 MKA07 MKA08 MKA09  
 MKAW01 MKAW02 MKAW03 MKAW04 MKAW05 MKAW06 MKAW07 MKAW08 MKAW09  
 (TWO-TONE MODEL)

Model	Head				Shaft	Length**
	Material	Hardness*	Core Size (mm)	Core Feature		
MKA01	Yarn Wound	Two-tone	ø 30×23	Dual-core with synthetic leather	Rattan	430 mm
MKA01					Birch	
MKA02		VH	ø 30×20	with additional weight	Rattan	400 mm
MKA02					Birch	
MKA03		H	ø 30×23	Dual-core with rubber tube (1 mm)	Rattan	430 mm
MKA03					Birch	
MKA04		MH	ø 30×23	Dual-core with rubber tube (1 mm)	Rattan	
MKA04					Birch	
MKA05		M	ø 30×23	Dual-core with rubber tube (1 mm)	Rattan	
MKA05					Birch	
MKA06		MS	ø 30×23	Dual-core with rubber tube (1 mm)	Rattan	
MKA06					Birch	
MKA07		S	ø 30×23	Dual-core with rubber tube (1 mm)	Rattan	
MKA07					Birch	
MKA08		VS	ø 33×23	Dual-core with rubber tube (2 mm)	Rattan	
MKA08			Birch			
MKA09		ES	ø 36×23	Dual-core with rubber tube (2 mm)	Rattan	
MKA09					Birch	

EH: Extra Hard VH: Very Hard H: Hard MH: Medium Hard M: Medium MS: Medium Soft S: Soft VS: Very Soft ES: Extra Soft

\*Since the core characteristics of these mallets differ from those of our regular mallets, the hardness scale will not always match the scale used with our regular mallets.  
 \*\*There is some variation in lengths.

## MALLET STAND



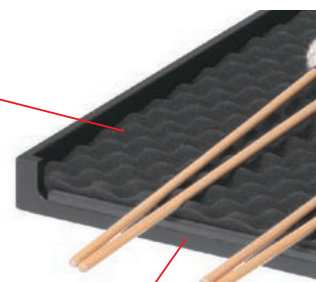
### YMS100

Height adjustment range: 730-1,120 mm  
 Table dimensions: 601×451×44 mm  
 Interior table dimensions:  
 583 ×433 mm×10 mm

Usage example



The top surface of the table is covered with a wave-cut urethane pad that minimizes noise when mallets are placed on the table and prevents mallets from rolling around.



The edge of the table that faces the performer is also cushioned to prevent noise when mallet shafts touch the table edge.

# TIMPANI

## TP8300R SERIES

The top-of-the-line timpani series features cambered hammered copper bowls and the pedal balance spring system. The cambered bowls deliver ample volume as well as optimum resonance and decay. The lineup includes 24-inch and 27-inch models for expanded musical potential.



## TP7300R SERIES

High-end models with hammered copper bowls. Hammering increases the strength of the bowl material for crisp attack and powerful sound. This series is designed to satisfy the needs of advanced players.



## TP6300R SERIES

These basic models feature smooth copper bowls that contribute to bright, resonant sound and outstanding playability that are ideal for ensemble situations.



## TP4300R SERIES

These models combine lightweight aluminum bowls with the same frames and overall performance as the high-end models. They have been specifically designed to deliver tone and resonance that are similar to copper bowls.



### Bowl Design

To bring out the very best qualities of the material used, bowl size, bearing edge shape, the diameter of the aperture in the bottom of the bowl, and other details have been meticulously examined and refined to deliver the deepest, richest tone possible in combination with outstanding playability.



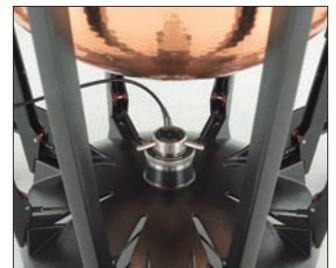
### Frame

The timpani frame does more than just support the bowl. It plays a significant role in sound quality as well. In addition to offering outstanding strength and operability, the frames are designed to a weight that contributes to optimum acoustic response.



### Tuning Indicator

The indicator can also be easily relocated to the left or right side of the instrument to facilitate German or American setups.



### Pedal Adjustment Clutch (PAC) System

The PAC system allows pedal resistance to be adjusted while maintaining perfect pedal balance. A large knob makes adjustment easy too.



## TP3300 SERIES

Although portable, the TP3300 Series delivers fully professional, top-class sound. It features aluminum bowls with the same shape as our top-line models, Renaissance heads, and hoops that all work together to create a deep, sustained tone.

No effort has been spared in achieving the smoothest, easiest possible operation and adjustment. Casters that allow smooth movement, pedals with a stable operating feel, and leg and pedal height that adjust easily all add up to stress free overall operation.



### Compact and Portable

The lightweight aluminum bowls and the ease with which the pedals and legs can be retracted make the entire system conveniently compact and portable.

### Pedal

Smoother, more stable pedal operation when playing at any pitch has been achieved through a new optimized spring design.

### Height Adjustment

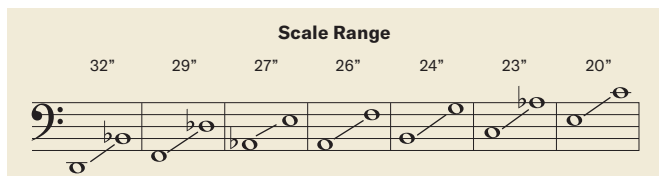
The ability to adjust the height of the instrument to the most comfortable height for individual players.

### Tuning Indicator

The indicator, that is supplied with the top-line models, can be easily relocated to the left or right side of the instrument to facilitate German or international setups.

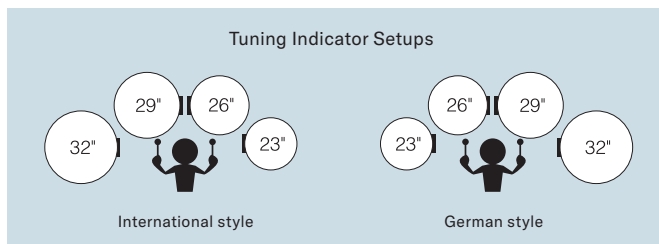
### TP8300R Series

Models	Size	Range	W x L x H (cm)	Bowl	Head
TP8320R	20" (51cm)	e-c1	65 x 79 x 85	Hammered Copper (Cambered)	Yamaha Remo Renaissance
TP8323R	23" (58cm)	c-a <sup>b</sup>	73 x 83 x 85		
TP8324R	24" (61cm)	b-g	76 x 91 x 85		
TP8326R	26" (66cm)	A-f	80 x 94 x 85		
TP8427R	27" (69cm)	A <sup>b</sup> -e	83 x 95 x 85		
TP8329R	29" (74cm)	F-d <sup>b</sup>	88 x 98 x 85		
TP8332R	32" (81cm)	D-B <sup>b</sup>	95 x 101 x 85		



### TP7300R Series

Models	Size	Range	W x L x H (cm)	Bowl	Head
TP7320R	20" (51cm)	e-c1	65 x 79 x 85	Hammered Copper	Yamaha Remo Renaissance
TP7323R	23" (58cm)	c-a <sup>b</sup>	73 x 83 x 85		
TP7326R	26" (66cm)	A-f	80 x 94 x 85		
TP7329R	29" (74cm)	F-d <sup>b</sup>	88 x 98 x 85		
TP7332R	32" (81cm)	D-B <sup>b</sup>	95 x 101 x 85		



### TP6300R Series

Models	Size	Range	W x L x H (cm)	Bowl	Head
TP6320R	20" (51cm)	e-c1	65 x 79 x 85	Copper	Yamaha Remo Renaissance
TP6323R	23" (58cm)	c-a <sup>b</sup>	73 x 83 x 85		
TP6326R	26" (66cm)	A-f	80 x 94 x 85		
TP6329R	29" (74cm)	F-d <sup>b</sup>	88 x 98 x 85		
TP6332R	32" (81cm)	D-B <sup>b</sup>	95 x 101 x 85		

### TP4300R Series

Models	Size	Range	W x L x H (cm)	Bowl	Head
TP4323R	23" (58cm)	c-a <sup>b</sup>	73 x 83 x 85	Aluminum	Yamaha Remo Renaissance
TP4326R	26" (66cm)	A-f	80 x 90 x 85		
TP4329R	29" (74cm)	F-d <sup>b</sup>	88 x 94 x 85		
TP4332R	32" (81cm)	D-B <sup>b</sup>	95 x 97 x 85		

### TP3300 Series

Models	Size	Range	W x L x H (cm)	Bowl	Head
TP3323	23" (58cm)	c-a <sup>b</sup>	73 x 87 x 79-82	Aluminum	Yamaha Remo Renaissance
TP3326	26" (66cm)	A-f	80 x 90 x 79-82		
TP3329	29" (74cm)	F-d <sup>b</sup>	84 x 94 x 79-82		
TP3332	32" (81cm)	D-B <sup>b</sup>	86 x 96 x 79-82		

TP8300R/7300R/6300R/4300R Series:

Tuning key, allen wrench, key/wrench holder, head protector are included.

TP3300 Series: Tuning key, allen wrench, key/wrench holder, head protector and mallets are included.

## TIMPANI MALLETS

Yamaha offers two different series of timpani mallets. The heads of the 200 Series are more rounded than those of the 100 Series.

Both are offered with three different degrees of hardness.



Models	Hard	Medium	Soft
200 Series	230	250	270
100 Series	130	150	170

# BASS DRUMS

Yamaha offers a wide range of concert bass drums to fit nearly any performance requirements. All shells are formed using Yamaha's proprietary Air-Seal System, which delivers a perfectly round shell. Shells have 6 or 7 ply construction, depending upon the series, and are fitted with birch ply or steel rims that offer added strength.

## CB9000 SERIES

Fat, mellow resonance makes this deep-shell series an excellent choice for bands and orchestras.



CB9036 (Stand: BS9036)



CB9032 (Stand: BS9032)



### New Shell Design

A new shell design employs maple for a solid low end with complex, delicate sustain.



### Solid Steel Hoops

Solid steel hoops provide a well-defined tonal core that cannot be achieved with wood hoops.

## CB8000 SERIES

Full resonance combines with lively response in this standard-depth series.



CB8036 (Stand: BS9036)



CB8032 (Stand: BS9032)



### Yamaha Remo Nuskyn Head

These high-quality heads offer attack and sustain that is similar to natural skin, along with deep, rich resonance.



### Fixed Mount System

Firmly securing the bass drum to the stand, this system also promotes deeper bass with strong presence and a solid core.

## CB7000 SERIES

These standard concert bass drums offer solid support for ensemble performance.



CB7036 (Stand: BS7053)



CB7032 (Stand: BS7051)



CB7028 (Stand: BS7051)



CB7024

**CB9000, 8000, 7000 Series**

Models	Size	Shell	Color	Hoop	Lug	Head (Batter)	Head (Bottom)	Drum and Stand Combination						
								BS9036	BS9032	BS7053	BS7052	BS7051	BS7050	
CB9036	36" x 22" (91 x 56 cm)	Maple 7-ply	Dark Wood	Steel	10	Yamaha Remo Nuskyn	Yamaha Remo Nuskyn	✓						
CB9032	32" x 20" (81 x 51 cm)				8			✓						
CB8036	36" x 18" (91 x 46 cm)				10			✓						
CB8032	32" x 18" (81 x 46 cm)				9			✓						
CB7036	36" x 16" (91 x 41 cm)	Birch 6-ply		Dark Wood	Birch Ply		12	Yamaha Remo Smooth White	Yamaha Remo Smooth White		✓	✓		
CB7032	32" x 16" (81 x 41 cm)						12						✓	✓
CB7028	28" x 14" (71 x 36 cm)						10						✓	✓
CB7024	24" x 14" (61 x 36 cm)						8						✓	✓

**BASS DRUM STANDS**



BS9036/9032



BS7053/7052/7051/7050

Models	Height
BS9036	84 cm
BS9032	84 cm
BS7053	89 cm
BS7052	79 cm
BS7051	89 cm
BS7050	79 cm

**FB9000 SERIES**

FB9000 provides punchy, deep tones with excellent projection. With four sizes from 18" to 24", the FB9000 series can be seen either as a low extension for concert toms, or a responsive high extension for concert bass drums. Either way, the FB9000 series gives users a wider choice of instrumentation for a variety of musical needs.



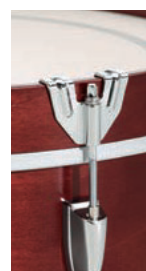
**Flexible setup**

Unlike conventional bass drum stands, the FB9000 series stands can be set to place the top head at the ideal playing height and position without restrictions imposed by stand shape or size.



**Heads**

The top heads are Yamaha REMO Powerstroke3 Coated types, with an internal ring that effectively controls harmonics for well-defined tone. The bottom heads are Yamaha REMO Clear Ambassador types, further contributing to rich, musical tone.



**Claw Hooks**

The claw hooks feature the same traditional design that is highly regarded in marching bass drum models. The tops of the tuning bolts do not protrude above the top of the hoop, preventing contact while playing and allowing the player to concentrate more fully on the performance.



**FT Brackets**

The same type of clamping brackets used on high-end Yamaha drums (Absolute Hybrid Maple and Live Custom) are employed on the FB9000 series. The legs are securely held between the clamping surfaces, effectively preventing slippage during the most dynamic performances.

**FB9000 Series**

Models	Size	Shell	Hoop	Color	Legs	Head (batter)	Head (bottom)
FB9018	18" x 16" (46 x 41cm)	Birch 6-ply	Birch 6-ply	Dark Wood	Extended Floor Bass Drum Legs	Yamaha REMO Powerstroke 3 Coated	Yamaha REMO Clear Ambassador
FB9020	20" x 16" (51 x 41cm)						
FB9022	22" x 16" (56 x 41cm)						
FB9024	24" x 16" (61 x 41cm)						

Tuning key is included.



# CONCERT TOMS

## CT9000 SERIES

This double-headed model is a perfect choice for a classical concert use. Proportional sizing, oak shell and YESS III Mount System give this instrument a unity in tone and abundant sustain, resulting in extraordinary range of expressivity.



Models	Size	Shell	Color	Head (Batter)	Head (Bottom)
CT9006	6" x 6 1/2"	Oak 6-ply	Dark Wood	Yamaha Remo Coated Ambassador	Yamaha Remo Clear Ambassador
CT9008	8" x 8"				
CT9010	10" x 9"				
CT9012	12" x 10"				
CT9013	13" x 10 1/2"				
CT9014	14" x 11"				
CT9015	15" x 11 1/2"				
CT9016	16" x 12"				



### YESS III Mount System

The YESS mount system has evolved once again, delivering further improvements in tonal purity and open sound without compromising the natural resonance of the shell in any way.

## CT8000 SERIES

The CT8000 Series are constructed using the Yamaha Air-Seal System and YESS Mount System to produce a quality drum and to achieve the distinct Yamaha sound.



Models	Size	Shell	Color	Head (Batter)
CT8006	6" x 6 1/2"	Birch ply 6-ply	Dark Wood	Yamaha Remo Pinstripe
CT8008	8" x 8"			
CT8010	10" x 9"			
CT8012	12" x 10"			
CT8013	13" x 10 1/2"			
CT8014	14" x 11"			
CT8015	15" x 11 1/2"			
CT8016	16" x 12"			



### YESS Mount System

Providing minimum mount-to-shell contact, the YESS delivers increased resonance plus maximizes dynamic range and sustain. Mounts are attached at the drum's nodal point where shell vibration is least effected.

### Tom Stand WS865A (Optional)

The WS865A tom stand utilizes a ball and socket design for complete adjustment and stability. The stand features a strong double-braced leg design, and securely supports two drums.

# SNARE DRUMS

## OSM SERIES

With shells of carefully selected maple, OSM Series concert snare drums deliver authentic concert snare tone. They are supplied with two different types of snares that can be changed to match different performance situations. OSM Series concert snare drums are a great choice for a wide range of musical demands: professional musicians, music students, symphonic orchestras and bands.



OSM1450



OSM1465



### Shallow Snare Bed

A shallow snare bed that is resistant to distortion on the snare side head is used for producing natural drum resonance. This results in an ideal combination of natural instrument tone and delicate snare response.



### K Type Strainer

Wide action contributes to smooth, precise operation with minimum noise.



### New System Snares (Coil and Straight Cable Snares)

In addition to coil snares, cable snares are provided so that the user can change snares according to musical requirements.



### Coil Snares

The new combination of a smaller coil diameter and a hard wire material (ultra high carbon steel) simultaneously achieves detailed pianissimo response and powerful fortissimo expression which could not be achieved with usual coil snares.

### Straight Cable Snares

The ten central strands give the sound power, while the three outer strands on each side add delicate response that allows subtle playing nuances to reach every corner of the concert hall.

Models	Size	Shell	Snare	Strainer	Hoop	Lug	Head (Batter)	Head (Bottom)
OSM1450	14" x 5"	Maple 7-ply	Coil snares	K Type	Aluminum Die-Cast	Tube Lug	Yamaha Remo Renaissance Diplomat	Yamaha Remo Snare Diplomat
OSM1465	14" x 6 1/2"		(Straight cable Snares is included)					

Tuning key is included.

## CSR SERIES

The CSR series features brass shells that deliver well-balanced tone that is also clear and bright. Straight snares, favored by professional and advanced players, enable crisp response and detailed expression. These high-grade metal-shell models are ideal for brass bands, orchestras, and a range of other performance situations.



CSR1450



CSR1465



### Brass Shell

Brass shells deliver well-balanced tone that is rich, expansive, and bright. After the shells are sanded, a clear lacquer is applied to produce a beautiful finish that really stands out on stage.



### Extra-deep Snare Bed

The snare bed (the part of the shell that contacts the snares) is 3.5 mm deep, improving contact with the snares and enhancing snare response, particularly at low volume.

\* Snare Bed: A shallow snare bed tends to emphasize body resonance, while a deep snare bed produces snappier snare response.



### Stainless Straight Snare Cables

Straight snare cables are an ideal match for the CSR1450 and CSR1465. Straight cables provide slighter greater bottom-head muting than coil cables, for snappier overall response that enables crisp phrasing. The inner-snare design makes handling easy.

Models	Size	Shell	Snare	Strainer	Hoop	Lug	Head (Batter)	Head (Bottom)
CSR1450	14" x 5"	Brass 1.2 mm	Stainless Straight Cables	Q Type	Dyne Hoop	Tube Lug	Yamaha Remo Renaissance Diplomat	Yamaha Remo Snare Diplomat
CSR1465	14" x 6 1/2"							

Tuning key is included.



# SNARE DRUMS

## CSM AII SERIES

These 8-ply maple shell models inherit the basic design of the GS Series, offering outstanding attack and versatility for a wide range of performance situations. The balance between shell and hoop has been improved in the 13-inch version, resulting in a brighter, more lively sound.



CSM1350AII



CSM1450AII



CSM1465AII



### Shell Design

The shell design achieves beautifully warm tone that also has outstanding snap and clarity. The thicker 8-ply maple shell facilitates even finer detail and expanded expressive capability.



### Q Type Strainer Release

Compact and easy to operate, the Q Type Strainer lets you tighten or release your snares quickly and quietly.



### Straight Cable Snares

Stainless straight cable snares are ideally matched to the drum's head for superior sound.



### Extra Deep Snare Bed

An extra deep snare bed results in improved contact between the snares and the bottom head for notably enhanced snare response.

Models	Size	Shell	Snare	Strainer	Hoop	Lug	Head (Batter)	Head (Bottom)
CSM1350AII	13" x 5"	Maple 8-ply	Stainless Steel Coiled Wires	Q Type	Triple Frange	Tube Lug	Yamaha Remo Coated	Yamaha Remo Snare Diplomat
CSM1450AII	14" x 5"				Dyna Hoop		Yamaha Remo Renaissance Diplomat	
CSM1465AII	14" x 6 1/2"							

Tuning key is included.

## CSS A SERIES

The steel shell features a sharp, clear tone and is equipped with the same hardware as found on the CSM AII Series. It is also equipped with a coil snare that is easy to use for all players.



CSS1450A



CSS1465A



### Coil Snares

Coil snares that produce a bright sound have been used in the CSS A Series. Coil snares also sustain longer than straight snares, making it easier to play even-sounding rolls and generally providing easier playability for beginners.

## KSD255

The steel shell drum features ten high-tension lugs and a high carbon steel coiled wire snare that combine to deliver a powerful, brisk sound. The inner mute is easy to use even for beginners.



### Q Type Strainer Release (CSS A Series)

The Q type strainer lets you tighten or release your snares quickly and quietly.

Models	Size	Shell	Snare	Strainer	Hoop	Lug	Head (Batter)	Head (Bottom)
CSS1450A	14" x 5"	Steel 1.2 mm	High-Carbon Steel Coiled Wires	Q Type	Dyna Hoop	Tube Lug	Yamaha Remo Ambassador Coated	Yamaha Remo Ambassador Snare
CSS1465A	14" x 6 1/2"						Coated Type	
KSD-255	14" x 5 1/2"						Steel 1.0 mm	

Tuning key is included.



# FIELD DRUM

The CFM1414 is a 14-inch concert field drum that has been designed for outdoor performance. It features a deep body that contributes to ample volume and a fat tone. Based on the CSM series design that is popular for its rich resonance and warm tone, the CFM1414 features vent holes and a snarebed that have been modified to enhance snare “snap” and response with this model’s deeper body.

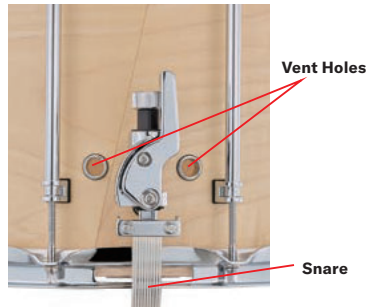


CFM1414



### Maple 8-ply shell

The CFM1414 features the same type of maple shell that affords rich resonance and warm tone in the CSM series. The tone remains distinct even in high-volume performance situations, while simultaneously allowing subtle expression.



Vent Holes

Snare

### Vent Holes

Although deep shells often result in compromised snare response, vent holes strategically placed at four locations near the snares maintain optimum response in the CFM1414.



### Extra-Deep Snare Bed

The snare bed (the part of the shell that contacts the snares) is 3.5 mm deep, improving contact with the snares and enhancing snare response, particularly at low volume. \* Snare Bed: A shallow snare bed tends to emphasize body resonance, while a deep snare bed produces snappier snare response.



### Stainless Straight Snare Cables

Straight snare cables are an ideal match for the CFM1414. Straight cables provide slighter greater bottom-head muting than coil cables, for snappier overall response that enables crisp phrasing. The inner-snare design makes handling easy.

Models	Size	Shell	Snare	Strainer	Hoop	Lug	Head (Batter)	Head (Bottom)
CFM1414	14" x 14"	Maple 8-ply	Stainless Straight Cables	Q Type	Dyne Hoop	Tube Lug	Yamaha Remo Renaissance	Yamaha Remo Snare Diplomat

Tuning key is included.

## SNARE STANDS



SS3H

Height adjustment: 63-91 cm



SS745A

Height adjustment: 60-91 cm



SS665

Height adjustment: 53-77 cm



### Ultra-lightweight aluminum alloy design (SS3H)

By using an aluminum alloy for most of the stand’s structure, weight has been reduced by about 50% compared to steel snare stands (in-house survey). The SS3H is also very compact when folded, providing a considerable improvement in portability.

Channel leg construction

Rubber feet

### Durable, Stable Construction

Although the SS3H is primarily constructed of lightweight aluminum pipe and aluminum castings, steel is used in a few small-but-critical areas that enhance overall strength. The legs are made of aluminum U-channel (channel legs) with a cross-section designed to maximize strength and durability as well as stability. This also makes the stand comfortable to hold for positioning and adjustment. Specially designed rubber feet prevent slippage while the stand is in use.

Models	Hight Adjustment	Weight
SS3H	63-91 cm	1.7 kg
SS745A	60-91 cm	3 kg
SS665	53-77 cm	2.7 kg



\*Specifications are subject to change without notice.  
\*Colors shown in this catalog may not be represented exactly as the original colors due to printing processes involved.  
\*Some models are not available in some regions. Please contact your dealer for more information.