



February, 2010

## **Subject: RX-V3900 Firmware Update ver. 1.11**

Yamaha is pleased to offer this firmware update to ensure the best possible performance for your Yamaha RX-V3900 AV Receiver.

This firmware improves HDMI standby through function.

The following pages contain the firmware update instructions for the RX-V3900. You can easily update the latest firmware either by using a USB thumb drive, or by connecting the receiver to the Internet. In order to properly execute the update, read all instructions carefully. The following links will also lead you directly to the beginning of each individual section of the instructions.

- ✓ [Click here to confirm the current firmware version before the update.](#)
- ✓ [Click here for the firmware update by USB thumb drive.](#)  
(Update by Network is recommended if your receiver is connected to the internet)
- ✓ [Click here for the firmware update by Network.](#)
- ✓ [Click here for the firmware version confirmation after update.](#)
- ✓ [Click here for troubleshooting.](#)

### **< IMPORTANT NOTICE >**

Do not attempt to update your Yamaha receiver using any other data file except those provided directly from the Yamaha website or through your network connection.

Follow the instructions carefully and do not attempt any other procedures not specified in the instructions provided by Yamaha.

Improperly updated products may cause improper operation, and any parts or service required to restore proper operation will not be covered under the Yamaha Limited Warranty.

## Confirming the firmware version

**Step1:** Set the **MASTER ON/OFF** button on the front panel to OFF, and confirm that the AC power cable is properly connected to an outlet.

**Step2** While pressing the **STRAIGHT** button, press (and release) the **MASTER ON/OFF** button and then keep pressing the **STRAIGHT** key until “**ADVANCED SETUP**” appears on the front panel display.  
(Note: “**ADVANCED SETUP**” is only displayed for a few seconds.)

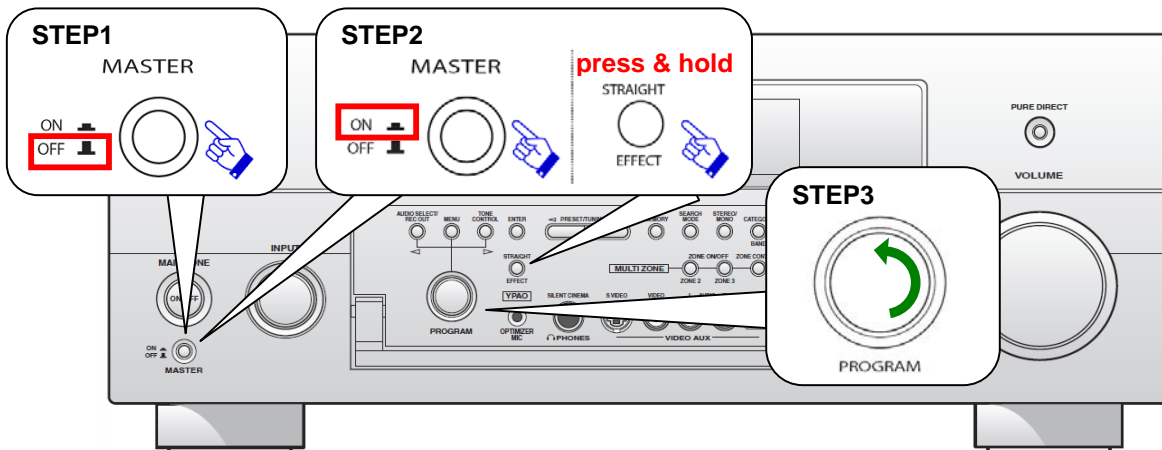


**Step3** Rotate the **PROGRAM** selector counterclockwise to select “**VERSION**”.

Latest version would be “**VERSION 1.11**”.

If your receiver’s version is lower than above, perform the update described in the following pages. **NETWORK UPDATE** is recommended if your receiver is connected to the internet. If not, perform **USB UPDATE**.

If “**ERROR**” appears, refer to the troubleshooting procedures on page 6 and retry the update.

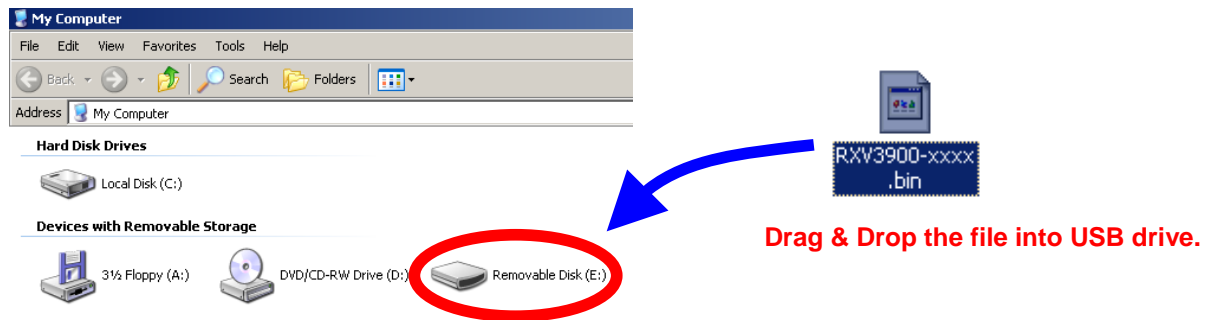


## Instruction for USB Update

**Requirement:** (Formatting by FAT system is required in advance).  
 - USB thumb drive, with enough free space to store over 16 MB.  
 - Firmware file provided by YAMAHA, "RXV3900-xxxx.bin".

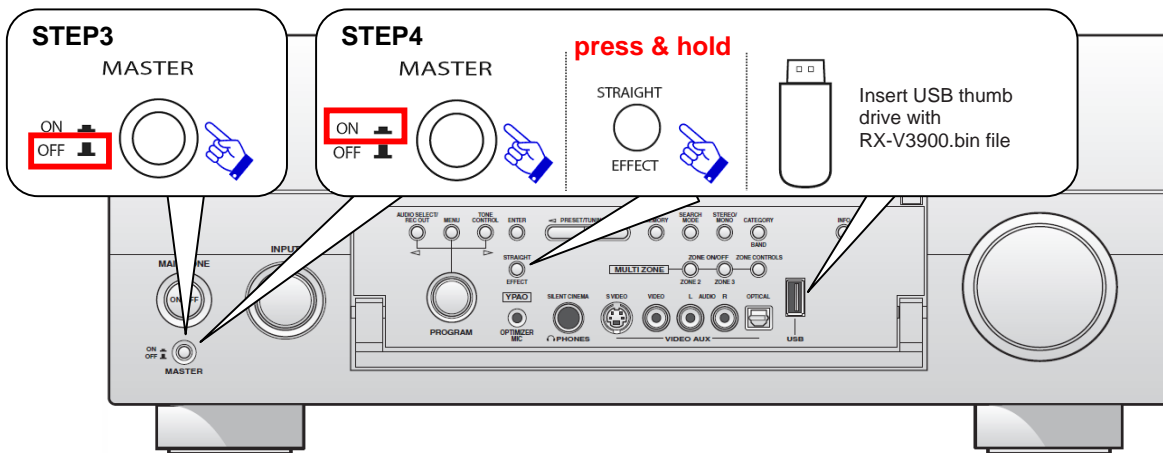
**Step1:** Delete any existing files in the USB thumb drive.

**Step2:** Copy the downloaded firmware "RXV3900-xxxx.bin" into the root directory of the USB thumb drive.



**Step3:** Set the **MASTER ON/OFF** button on the front panel to OFF, and confirm that the AC power cable is properly connected to an outlet.

**Step4:** Insert the USB thumb drive in the USB terminal located on the front panel. While pressing the **STRAIGHT** button, press (and release) the **MASTER ON/OFF** button and then keep depressing the **STRAIGHT** button until "ADVANCED SETUP" appears on the front panel display. (Note: "ADVANCED SETUP" is only displayed for a few seconds.)



**Step5** Rotate the **PROGRAM** selector counterclockwise to select “*FIRM UPDATE USB*”.



**Step6** To start the firmware update, press the **MENU** button.  
(Allow about 10 minutes for the update)

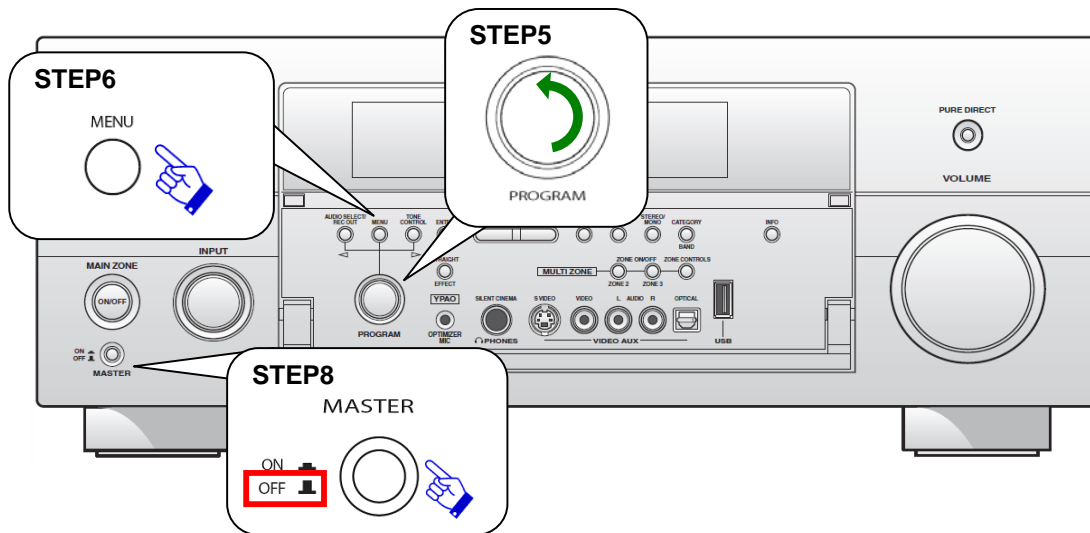
*Firmware reprogramming in progress*



**Caution!** Do not interrupt power or remove the USB thumb drive during the update. In case the power is accidentally cut off, refer to troubleshooting procedures on page 6 to recover.

**Step7** When “*UPDATE OK*” appears on the display, firmware update is completed. The receiver automatically powers off and on again in normal operation mode.

**Step8** Power OFF the unit by pressing **MASTER ON/OFF** button on the front panel. Remove the USB thumb drive.



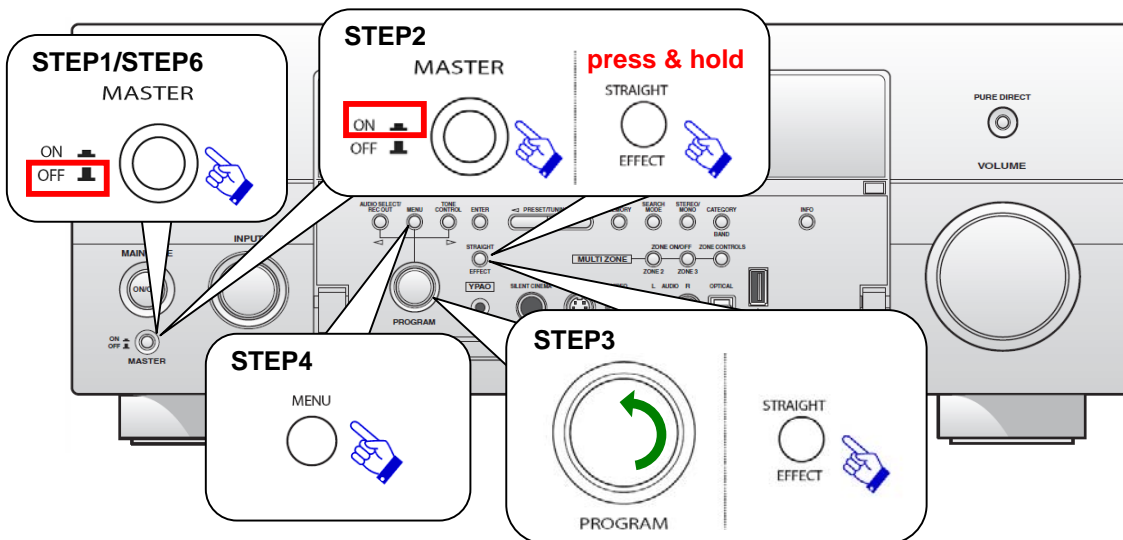
**Step9** Check the updated firmware version.

## Instruction for Network Update

**Requirement:** Network environment to be able to connect to the Internet via RX-V3900. (For more information, refer to the owner's manual.)

**Step1:** Set the **MASTER ON/OFF** button on the front panel to OFF, and confirm that the AC power cable is properly connected to an outlet.

**Step2:** While pressing the **STRAIGHT** button, press (and release) the **MASTER ON/OFF** button and then keep depressing the **STRAIGHT** button until "ADVANCED SETUP" appears on the front panel display.  
(Note: the "ADVANCED SETUP" is only displayed for a few seconds.)



**Step3** Rotate the **PROGRAM** knob counterclockwise to select "FIRM UPDATE USB".  
Press **STRAIGHT** button to change update mode to network.



**Step4** To start the firmware update, press the **MENU** button. (allow about 10mins)  
*Firmware reprogramming in progress*



**Caution!** Do not interrupt power during the update.

**Step5** When "UPDATE OK" appears on the display, firmware update is completed. The receiver automatically powers off and on again in normal operation mode.

**Step6** Power OFF the unit by pressing **MASTER ON/OFF** button on the front panel.

**Step7** Check the updated firmware version.

## Troubleshooting Firmware Update

**Case #1:** Instead of “*UPDATE OK*”, an error message appeared on the display during updating or “*ERROR*” appeared when confirming the firmware version in Advanced Setup.

To recover, retry the update procedure of USB/Network from first step again.

*In case the update has failed with network method, perform USB update method for recovery.*

**Case #2:** “Thumb Data Err” / “Firm Update” appeared on the display.

To recover,

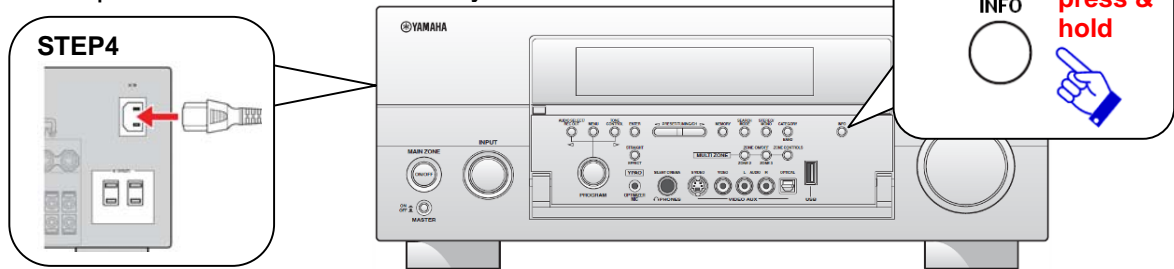
1. Press **MENU** button. “*FirmUpdate, push MENU key*” will appear on the display.
2. Unplug the USB thumb drive and copy the update file again.
3. Insert the USB thumb drive in the USB terminal on the front panel.
4. Start firmware update by pressing the **MENU** button.
5. When “*UPDATE OK*” appears on the display, firmware update is completed. System will reboot automatically.
6. Power OFF the unit by pressing **MASTER ON/OFF** button on the front panel.
7. Remove the USB thumb drive.

**Case #3:** Firmware update doesn't start for other reasons.

For example, the unit does not power up after the **MASTER ON/OFF** button is pressed. Or, “*DEVICE ERROR*” appeared on the front display.

To recover,

1. Unplug the AC power cable from the back of the receiver.
2. Set the **MASTER ON/OFF** button on the front panel to ON.
3. Insert the USB thumb drive in the USB terminal located on the front panel.
4. Press and hold the **INFO** key and keep it pressed while you plug the AC power cable back into the receiver again. The front panel display shows “*FirmwareUpdate*”
5. The update will start automatically.



6. When “*UPDATE OK*” appears on the display, firmware update is completed. System will turn off and on again automatically.
7. Power OFF the unit by pressing **MASTER ON/OFF** button on the front panel.
8. Remove the USB thumb drive.