

PORTABLE PA SYSTEM
STAGEPAS 400i

Owner's Manual

Introduction

Thank you and congratulations on your purchase of the Yamaha STAGEPAS 400i Portable PA System. The STAGEPAS 400i is an all-in-one PA system, consisting of two dedicated speakers and a powered mixer. In order to get the most out of your new STAGEPAS 400i and its sophisticated functions, we suggest you read through this manual thoroughly. Also keep it in a safe place for future reference.

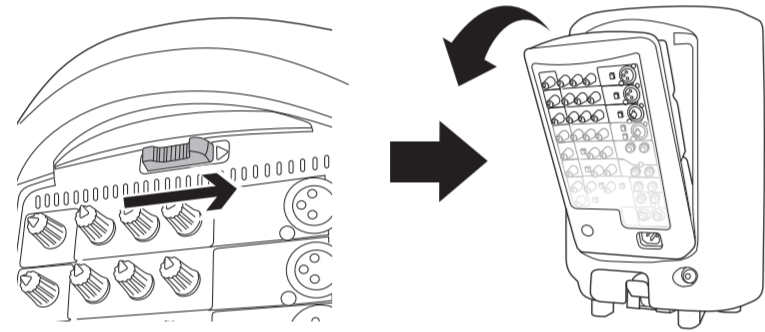
Main Features

- 400 watts power amplifier for versatility in a wide variety of performance applications.
- 8-inch two-way bass-reflex type speakers for high-quality, powerful sound.
- 8-channel mixer features four mono mic/line and two stereo line input channels to support a wide range of inputs.
- Yamaha's high-quality SPX reverb, providing optimum processing for instruments or vocals.
- Feedback Suppressor, which automatically cuts and prevents undesirable feedback noise.
- USB connector for convenient digital connection with an iPod/iPhone, and allows charging of the device.

QuickStart Guide

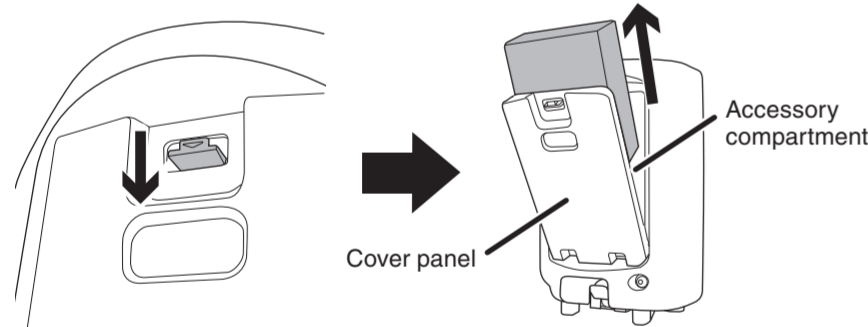
Connecting the speakers and the mixer

- Slide the mixer's lock in the direction of the arrow (shown below), and then remove it from the speaker.



- Open the cover panel attached to the other speaker, and then remove the box from inside the accessory compartment.

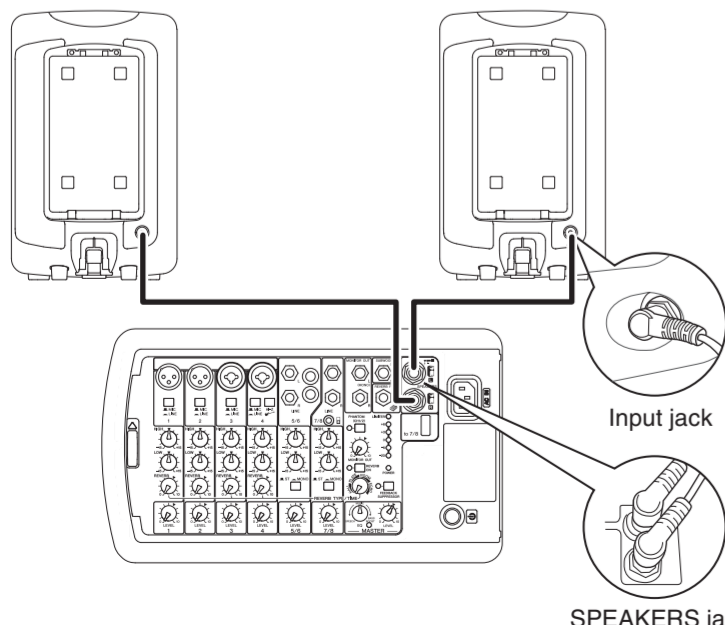
Two speaker cables and one power cord are included in the box.



NOTE After the box is removed, loose items, such as the included power cord, speaker cables, owner's manual (this booklet), and an optional microphone can conveniently be stored in the accessory compartment.

- Connect the speakers and the mixer.

Connect the mixer's SPEAKERS jack to the speakers' input jack using the included speaker cables. As shown in the illustration below, make sure to insert the speaker cables all the way inside until secure.

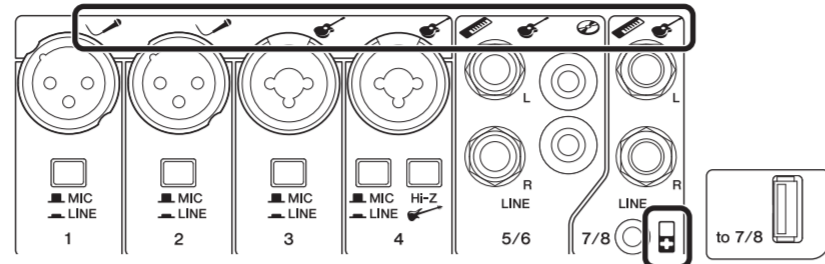


Caution
Use only the included speaker cables. Use of other cables may result in heat generation, or short circuiting.

Connecting microphones, instruments, and audio devices to the mixer

- Connect desired devices, such as a microphone, or an instrument to the input jack of the mixer.

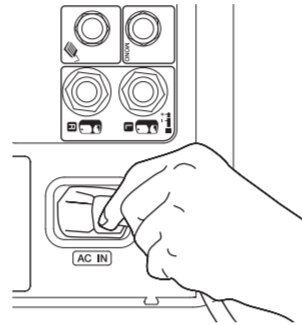
Refer to the illustration on the mixer shown below or the connection example of the cover panel of the accessory compartment.



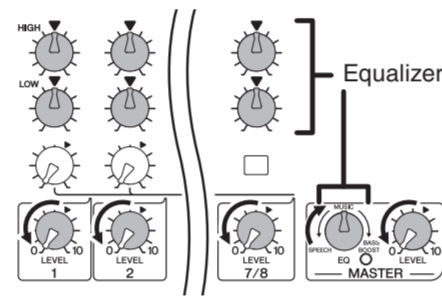
Getting sound out of the system

- Connect the included power cord.

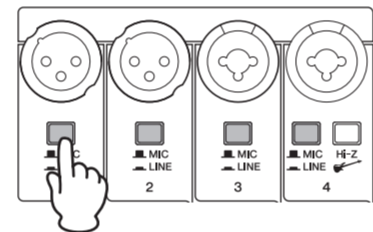
First, connect it to the mixer's AC IN connector, then to a power outlet.



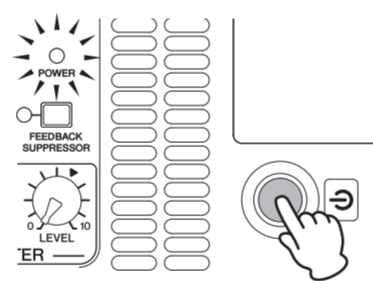
- Turn the mixer's LEVEL controls (white knobs) and MASTER LEVEL control (red knob) to the minimum (zero). Also, set the equalizer controls (green knobs) to the center "▼" or "MUSIC" position.



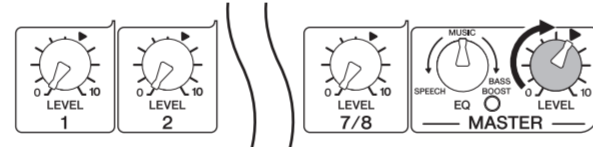
- Set the MIC/LINE switch to the MIC (M) position for microphone connection, and to the LINE (L) position for connection of an instrument or audio device.



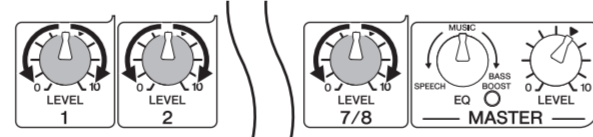
- Turn on the power of the connected sound source (if applicable), then the mixer. The POWER LED lights.



- Set the MASTER LEVEL control to the "▼" position.



- While playing your instrument or singing into the microphone, use the LEVEL control to adjust the volume of the corresponding channel.



- Use the MASTER LEVEL control to adjust the overall volume.

If you hear the sound and the volume seems appropriate, setup is complete. If not, please refer to the check list in the "Troubleshooting" section on the back of this booklet.

NOTE To avoid any loud, unexpected noise from the speaker, first turn off the power to the mixer, then the connected sound source (such as an instrument or audio device).

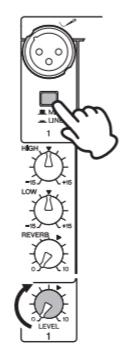
Making optimum volume settings

When the volume is too loud

Turn the LEVEL control to the minimum (zero). Set the MIC/LINE switch to the LINE (L) position, then slowly raise the LEVEL control until the desired volume is reached.

When the volume is too soft

Turn the LEVEL control to the minimum (zero). Set the MIC/LINE switch to the MIC (M) position, then slowly raise the LEVEL control until the desired volume is reached.



Applying Reverb

The STAGEPAS 400i features a built-in reverb processor that is in the same league as our famed SPX effect processor series. This reverb lets you simulate the acoustics of different performance environments, such as concert halls and small clubs, and add warm, natural ambience to your vocals or instrument performance.

- Press down the REVERB switch to turn it on.

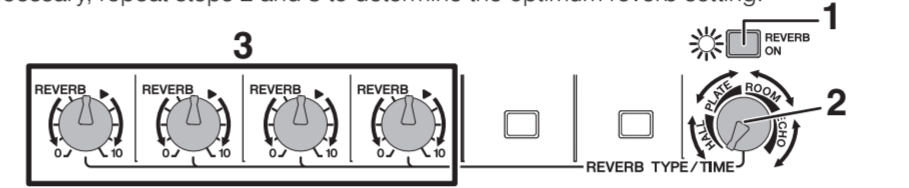
The LED lights when REVERB is on.

- Position the REVERB TYPE/TIME control to the desired reverb type and time (length).

Turning the control toward the right lengthens the time of the selected reverb type.

- Use the REVERB control to adjust the reverb amount of the corresponding channel.

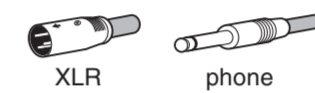
If necessary, repeat steps 2 and 3 to determine the optimum reverb setting.



Mixer Controls and Functions

- Mic/Line input jacks (channels 1-4)

Connect microphones, guitars, electronic musical instruments or audio equipment. Channels 3 and 4 provide combo jacks that support both XLR and phone plugs.



- MIC/LINE switches (channels 1-4)

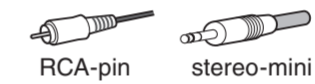
For low-level signals (including microphones), set the switch to the MIC (M) position. For high-level signals (including electronic instruments and audio equipment), set the switch to the LINE (L) position.

- Hi-Z switch (channel 4)

This switch is used when connecting a device directly to the mixer without a DI (direct box)—for example, instruments with passive pickups, such as an acoustic-electric guitar or electric bass without battery. This function is effective only for the phone jack input.

- Line (stereo) input jacks (channels 5/6, 7/8)

Connect line-level devices such as electronic instruments, acoustic-electric guitars, CD players, and portable audio players. These jacks support phone, RCA-pin, and stereo-mini plugs.



NOTE For the channel 5/6 input, if both phone and RCA-pin jacks are used at the same time, the phone jack will take priority. For the channel 7/8 input, if both phone and stereo mini jacks are used at the same time, the stereo mini jack will take priority. The signal from the device connected to another jack will be muted. The music signals from iPod/iPhone (i) are always mixed to channels 7/8.

- Equalizer controls (HIGH, LOW)

This two-band equalizer adjusts the channel's high and low frequency bands. Setting the control to the "▼" position produces a flat response in the corresponding band. Turning the control clockwise boosts the selected band. If you start getting feedback, turn the control back slightly.

- REVERB switch/LED

When this switch is on, the LED lights indicating that you can apply reverb. This switch is off when you turn on the mixer. (Unlike other switches, this switch cannot be locked.)

- REVERB TYPE/TIME control

Determines the reverb type and its length. Turning the control toward the right lengthens the time of the selected reverb type.

HALL: Simulated reverb of a large space, such as a concert hall.

PLATE: Simulated metal plate reverb, producing a more hard-edged and bright sound.

ROOM: Simulated acoustic ambience of a small room.

ECHO: Echo effect suitable for vocals.

- REVERB controls (channels 1-4)

Determines the amount of reverb for each channel when the REVERB switch (i) is on.

- ST/MONO switches (channels 5/6, 7/8)

Setting the switch to ST (STEREO) (S) will assign the signals from the L and R channels to each left and right speaker and output each signal. Setting the switch to MONO (M) will mix the output of different L and R sources to output the same signal to both the left and right speakers. For keyboards with mono output, guitars, or other non-stereo sound sources, when the switch is set to MONO, the stereo jacks can be conveniently used as multiple mono jacks.

- LEVEL meter

The LEVEL meter shows the level of output signal from the SPEAKERS L/R jacks.

Caution

If used at a high volume so that the LIMITER LED flashes continuously, the internal power amplifier section is being excessively overloaded and may malfunction. Reduce the output level with the MASTER LEVEL control so that the indicator flashes only briefly on the highest transient peaks.

- POWER LED

This LED lights when the power is turned on by pressing the power switch.

- FEEDBACK SUPPRESSOR switch/LED

When this switch is on, the LED lights indicating that feedback is automatically suppressed. (This utilizes a seven-band notch filter. When this switch or the power switch is off, the notch filter will be reset.)

- MONITOR OUT jacks

These are for connection to a powered speaker for monitoring purposes, and output a mix of the signals from channels 1 to 7/8. You can adjust the output level using the MONITOR OUT control (i). If only the L (MONO) jack is used, the signals from the L and R channels are mixed and output.

- SUBWOOFER OUT jack

This is for connection to a powered subwoofer, and outputs a mono signal. If this jack is in use, the low frequencies below 120Hz to the SPEAKERS L/R jacks will be cut. The output level is linked to that of the MASTER LEVEL control (j).

- REVERB FOOT SW jack

This is for connection to an unlatched-type footswitch such as the Yamaha FC5—useful for solo performers, since you can toggle the reverb on and off as needed with your foot.

- SPEAKERS L/R jacks

Use the included speaker cables to connect the dedicated speakers.

- USB connector

Connect your iPod/iPhone using a USB cable to play music and charge the iPod/iPhone. Use the LEVEL control of channels 7/8 to adjust the volume, since the music signals are mixed to those channels. This connector supplies 5V power to the connected USB device. This connector does not support digital playback from USB devices other than the iPod/iPhone. For playback of such devices, use appropriate stereo mini or RCA pin connectors.

Caution

Use a genuine Apple Dock Connector USB Cable for the iPod/iPhone connection.

Please do not use a USB hub.

NOTE If you connect an iPhone, incoming calls or emails may cause a notification sound to be output. In order to prevent this, we recommend setting the iPhone's Airplane mode to "on."

- PHANTOM (CH1/2) switch /LED

When this switch is on, the LED lights indicating that phantom power is available for channels 1 and 2. Turn this switch on to supply power to condenser microphones or a DI (direct box).

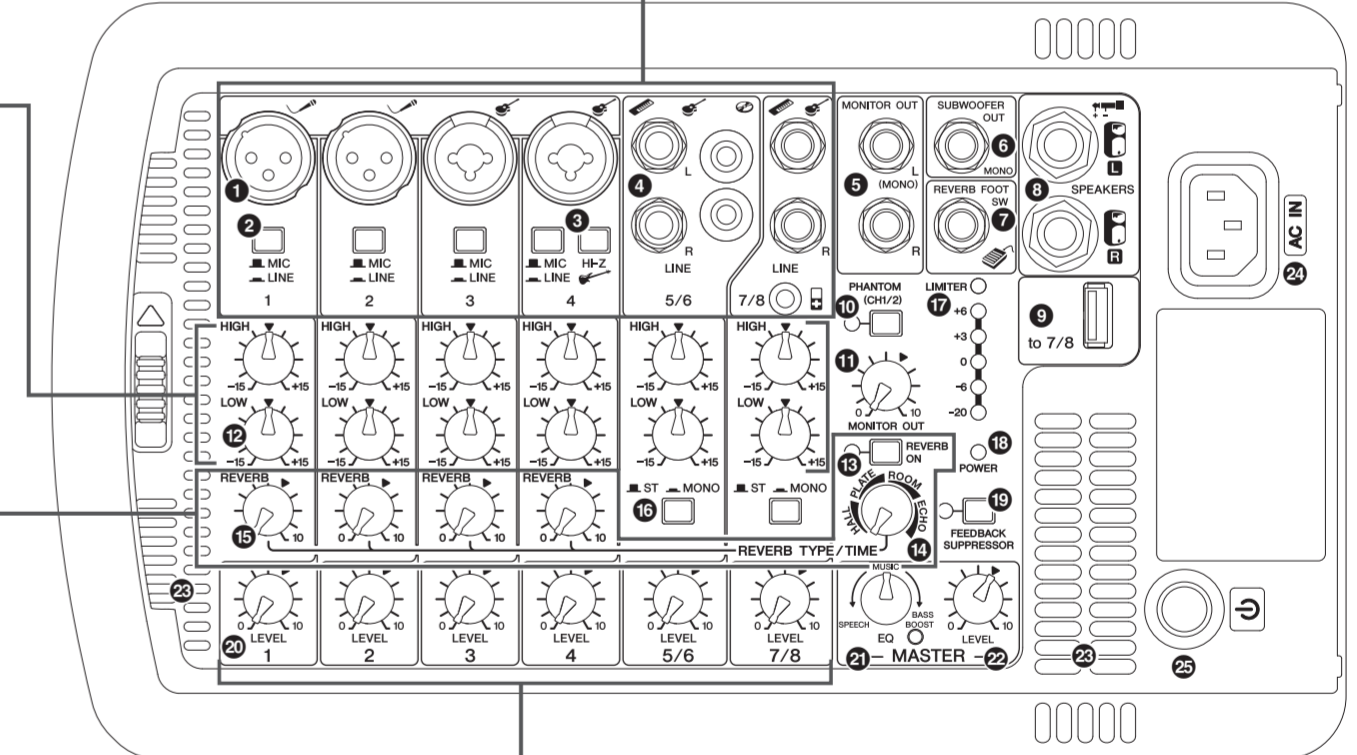
Caution

Follow the important precautions below, in order to prevent noise and possible damage to external devices and the unit when you operate this switch.

- Be sure to leave this switch off if you do not need phantom power, or when you connect a device that does not support phantom power to channels 1 or 2.
- Do not connect/disconnect a cable to/from channels 1 and 2 while this switch on.
- Turn the LEVEL control of the channels 1 and 2 to the minimum before operating this switch.

- MONITOR OUT control

Determines the signal level output from the MONITOR OUT jacks (i). The MASTER LEVEL control does not affect the MONITOR OUT signal.



- LEVEL controls

Use these controls to adjust the volume for each channel. To reduce noise, set any LEVEL controls on unused channels to the minimum.

- MASTER EQ (equalizer) control

Use this control to adjust the overall sound frequency balance. The center position "MUSIC" is a basic setting and if you turn the control counterclockwise, this creates an optimum setting for speech, cutting unneeded low range frequencies. If you turn the control clockwise, it creates an optimum setting for playback of sound sources, since the low range is boosted. If you turn the control clockwise further, the LED lights indicating that the bass boost function turns on, giving you even more powerful bass tone.

- MASTER LEVEL control

Determines the volume of the signal output from the SPEAKERS L/R jacks. This allows you to adjust the overall volume without changing the relative volume balance among the various channels.

- Vents

These are the vents for the cooling fan inside the mixer. Do not block the vents when in use.

- AC IN jack

Connect the included power cord here.

- (power) switch

For turning the power of the mixer on (L) and off (M).

Caution

Rapidly turning the unit on and off in succession may cause it to malfunction. After turning the unit off, wait for about 5 seconds before turning it on again.

Troubleshooting

Power does not turn on.

- Did you firmly and securely connect the power cord?

Power shuts down suddenly.

- Are the vents of the mixer blocked?

Since inadequate ventilation can result in overheating the mixer, the power may be turned off automatically to protect from overheating. Secure the ventilation for cooling, then turn on the power again.

No sound is heard.

- Did you connect the mixer's SPEAKERS jacks and the speakers' input jacks using the proper speaker cables?

- Did you firmly and securely connect the speaker cables?

- Is a speaker other than the included speaker (MODEL 400S) connected to the mixer's SPEAKERS jacks?

Please connect the included speaker (MODEL 400S).

- Did you use the included speaker cables?

If you use a commercially-available speaker cable with a metal-housing connector, the cable will be shorted when the connector touches other metal, resulting in no sound being produced.

- Is the POWER LED flashing at intervals?

There may be a short in the speaker cable or the connection may be faulty. Check that the speaker cable is not scratched and is connected properly to the mixer, then reapply the power.

- For channels 5/6, are both phone and RCA-pin jacks connected at the same time? Or, for channels 7/8, are both phone and stereo mini jacks connected at the same time?

The phone jack has priority for channels 5/6 and the stereo mini jack has priority for 7/8.

- Is the POWER LED flashing continuously?

If the internal power amplifier section is excessively overloaded, the amplifier will be muted for protection. The mixer will automatically reset itself after a while.

Sound is distorted or noise is produced

- Are the LEVEL controls of all relevant channels and/or the MASTER LEVEL control set too high?

If the input level from the source is high, setting the MIC/LINE switch to MIC may result in distorted sound. Set the switch to LINE position.

- Is the volume of the connected device too high?

Lower the volume of the external device.

- Is the speaker cable or the power cord located near the input cables?

Please keep it away from the input cables.

Sound is not loud enough

- Are the LEVEL controls of all relevant channels and/or the MASTER LEVEL control set too low?

Turn the LEVEL control to the minimum (zero). Set the switch to the MIC position, then slowly raise the LEVEL control.

- Is the volume of the connected device too low?

Raise the volume of the external device.

- Is the PHANTOM switch set to on when using a microphone that requires phantom power?

The high sounds and low sounds are unbalanced.

- Are the equalizer controls raised or lowered too much?

Set the equalizer controls to the center position.

- Is the speaker properly outputting the high-frequency range signals?

If not, check the "Protective circuit (poly switch)" note in the Notice section.

iPod/iPhone is not recognized

- Is your iPod/iPhone charged?

If your iPod/iPhone has not been charged, it may take some time to be recognized by the mixer. Make sure that your iPod/iPhone is connected to the mixer and wait until it is sufficiently charged.

* If any specific problem should persist, please contact your Yamaha dealer.

Specifications

General Specifications

Maximum Output Power (SPEAKERS L/R)

200 W + 200 W/4 Ω @Dynamic at 1 kHz
180 W + 200 W/4 Ω @10% THD at 1 kHz
≥125 W + 125 W/4 Ω @1% THD at 1 kHz

Frequency Response

-3 dB, +1 dB @ 40 Hz-20 kHz, 1 W Output/4Ω (without EQ and SP EQ) (SPEAKERS L/R)
-3 dB, +1 dB @ 40 Hz-20 kHz, +4 dBu 10 kΩ Load (MONITOR OUT)

Total Harmonic Distortion

≤0.5% @20 Hz-20 kHz, +11 dBu 10 kΩ (MONITOR OUT)

Hum & Noise (Rs=150 Ω, MIC/LINE switch=MIC)

≤-113 dBu Equivalent input noise (CH1-4)
≤-60 dBu Residual output noise (SPEAKERS L/R)

Crosstalk (1 kHz)

≤-70 dB between input channels

Phantom Voltage

+30 V (CH1, 2)

Weight

17.8 kg (39.2 lbs) (Speaker 7.5 kg x 2 + Mixer 2.8 kg)

Package Contents

STAGEPAS 400i (includes two MODEL 400S Speakers and a Powered Mixer), Cover Panel, Power Cord (2m), two Speaker Cables (6m), 12 Non-Skid Pads, Owner's Manual (this booklet)

Power Consumption

30 W (Idle), 70 W (1/8 Power)

Power Requirement

100 V - 240 V 50 Hz/60 Hz

Input Channel Equalization

±15 dB
HIGH: 8 kHz shelving
LOW: 100 Hz shelving

Supported iPod/iPhone models (as of August 2012)

iPod touch (1st, 2nd, 3rd, and 4th generation)
iPod classic, iPod nano (2nd, 3rd, 4th, 5th, and 6th generation), iPhone 4S, iPhone 4, iPhone 3GS, iPhone 3G, iPhone
For updated information, check the Yamaha Pro Audio website (<http://www.yamahaproaudio.com/>).

Dedicated Speakers (MODEL 400S)

Enclosure

2-way bass-reflex type

Speaker Unit

LF: 8" (20 cm) Cone
HF: 1" (2.54 cm) Compression Driver

Crossover Frequency

3.2 kHz

Frequency Range

55 Hz-20 kHz (-10 dB)

Maximum Output Level

125 dB SPL (Measured peak IEC noise@1m)

Coverage Angle

90° (Horizontal)/60° (Vertical)

Input Characteristics

Input Terminals	MIC/LINE	Input Impedance	Source Impedance	Input Level			Connector Type	
				Sensitivity	Nominal	Max. before Clipping		
CH IN 1-2	XLR	MIC	3 kΩ	150 Ω Mics	-56 dBu	-35 dBu	-10 dBu	XLR-3-31
	LINE				-30 dBu	-9 dBu	+16 dBu	
CH IN 3-4	XLR	MIC	3 kΩ	150 Ω Mics	-56 dBu	-35 dBu	-10 dBu	XLR Combo
		LINE			-30 dBu	-9 dBu	+16 dBu	
	Phone	MIC	10 kΩ (Hi-Z 1 MΩ)	150 Ω Lines (Hi-Z 10 KΩ)	-50 dBu	-29 dBu	-4 dBu	
CH IN 5/6	Phone	-	10 kΩ	150 Ω Lines	-24 dBu	-3 dBu	+22 dBu	Phone*
		Pin	-	10 kΩ	150 Ω Lines	-24 dBu	-3 dBu	+22 dBu
CH IN 7/8	Phone	-	10 kΩ	150 Ω Lines	-24 dBu	-3 dBu	+22 dBu	Phone*
		Mini	-	10 kΩ	150 Ω Lines	-24 dBu	-3 dBu	+22 dBu

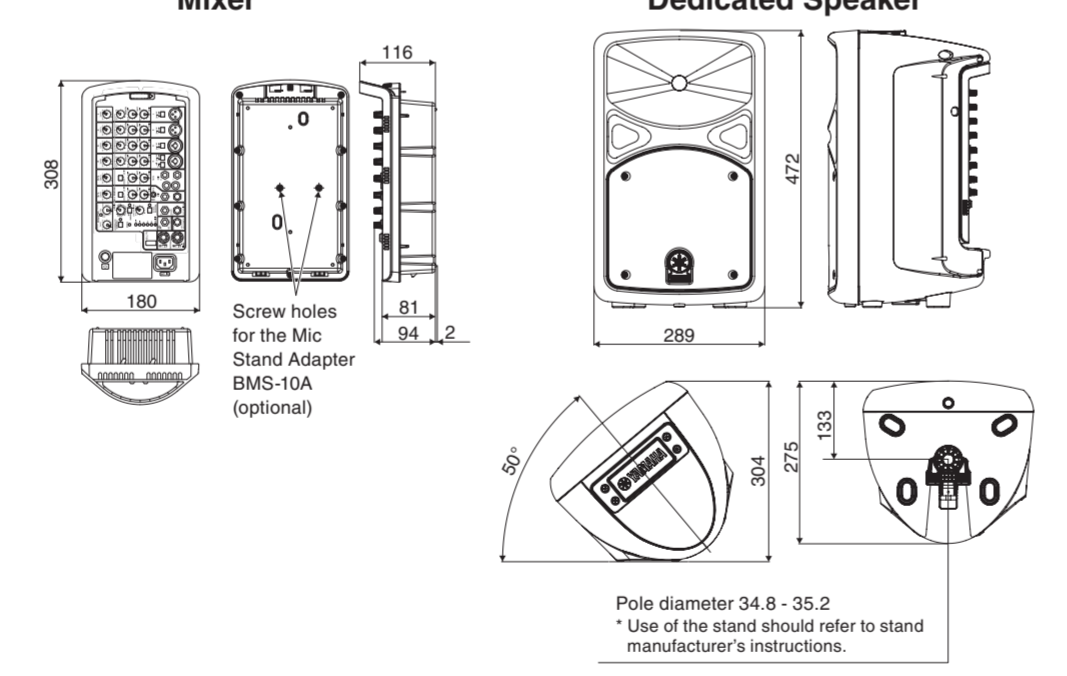
Output Characteristics

Output Terminals	Output Impedance	Load Impedance	Output Level				Connector Type
			Nominal	Max. before Clipping	Typ at THD+N 10%	Dynamic	
SPEAKERS OUT [L,R]	<0.1 Ω	4 Ω Speakers	37.5 W	125 W	180 W	200 W	Phone*
MONITOR OUT [L,R]	600 Ω	10 kΩ Lines	+4 dBu	+20 dBu	-	-	Phone*
SUBWOOFER OUT	150 Ω	10 kΩ Lines	-3 dBu	+17 dBu	-	-	Phone*

0 dBu=0.775 Vrms, 0 dBV=1 Vrms Phone*: Unbalanced

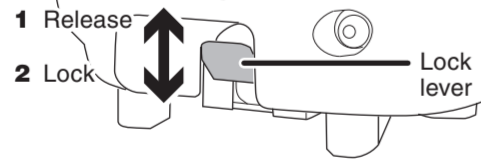
Specifications and descriptions in this owner's manual are for information purposes only. Yamaha Corp.reserves the right to change or modify products or specifications at any time without prior notice. Since specifications, equipment or options may not be the same in every locale, please check with your Yamaha dealer.

Dimensions

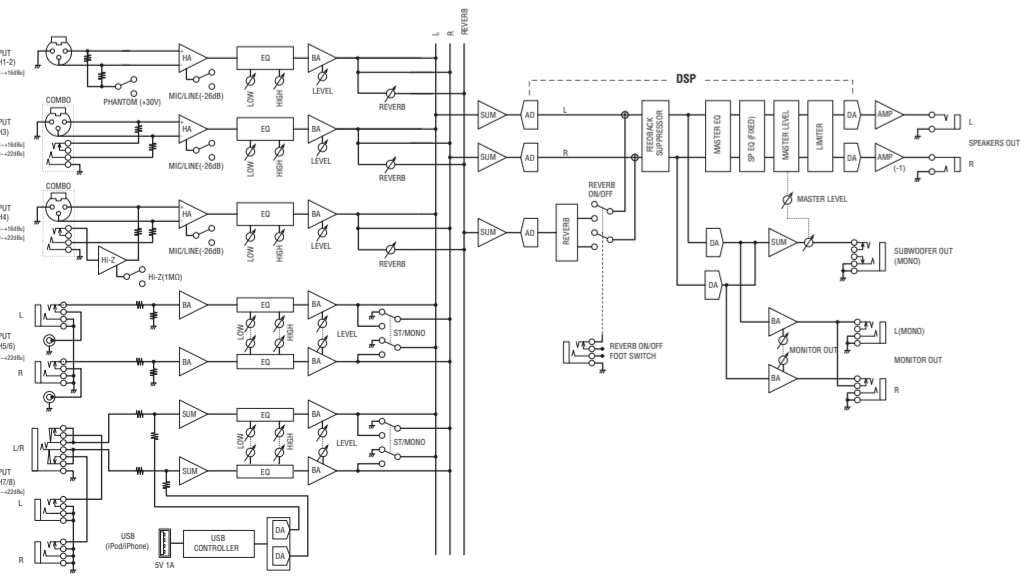


Attaching a speaker to a speaker stand

- Attach the speaker to the speaker stand with the lock lever moved up (release position).
- Move the lock lever down to lock to the stand.



Block Diagram



Do not open

- This device contains no user-serviceable parts. Do not open the device or attempt to disassemble the internal parts or modify them in any way. If it should appear to be malfunctioning, discontinue use immediately and have it inspected by qualified Yamaha service personnel.

Water warning

- Do not expose the device to rain, use it near water or in damp or wet conditions, or place it in any containers (such as vases, bottles or glasses) containing liquids which might spill into any openings. If any liquid such as water seeps into the device, turn off the power immediately and unplug the power cord from the AC outlet. Then have the device inspected by qualified Yamaha service personnel.
- Never insert or remove an electric plug with wet hands.

Fire warning

- Do not put burning items, such as candles, on the unit. A burning item may fall over and cause a fire.

If you notice any abnormality

- When one of the following problems occur, immediately turn off the power switch and disconnect the electric plug from the outlet. Then have the device inspected by Yamaha service personnel.
 - The power cord or plug becomes frayed or damaged.
 - It emits unusual smells or smoke.
 - Some object has been dropped into the instrument.
 - There is a sudden loss of sound during use of the device.
- If this mixer should be dropped or damaged, immediately turn off the power switch, disconnect the electric plug from the outlet, and have the device inspected by qualified Yamaha service personnel.

CAUTION

Always follow the basic precautions listed below to avoid the possibility of physical injury to you or others, or damage to the device or other property. These precautions include, but are not limited to, the following:

Power supply/Power cord

- When removing the electric plug from the device or an outlet, always hold the plug itself and not the cord. Pulling by the cord can damage it.
- Remove the electric plug from the outlet when the device is not to be used for extended periods of time, or during electrical storms.

Location

- Do not place the device in an unstable position. Unless the device is securely affixed, do not install it in a location where it might fall, even if the surface is level.
- Do not block the vents. This mixer has ventilation holes at the top and sides to prevent the internal temperature from becoming too high. In particular, do not place the mixer on its side or upside down. Inadequate ventilation can result in overheating, possibly causing damage to the mixer, or even fire.

Notice

To avoid the possibility of malfunction or damage to the product, follow the notices below.

Handling and Maintenance

- Do not use the device to excessive dust or vibration, or extreme cold or heat (such as in direct sunlight, near a heater, or in a car during the day), in order to prevent the possibility of panel disfiguration, unstable operation, or damage to the internal components.
- Do not place vinyl, plastic or rubber objects on the device, since this might discolor the panel.
- When cleaning the device, use a dry and soft cloth. Do not use paint thinners, solvents, cleaning fluids, or chemical-impregnated wiping cloths.

- Condensation can occur in the device due to rapid, drastic changes in ambient temperature—when the device is moved from one location to another, or air conditioning is turned on or off, for example. Using the device while condensation is present can cause damage. If there is reason to believe that condensation might have occurred, leave the device for several hours without turning on the power until the condensation has completely dried out.

- Avoid setting all equalizer controls and LEVEL knobs to their maximum. Depending on the condition of the connected devices, doing so may cause feedback and can damage the speakers.

- When turning on the AC power in your audio system, always turn on the mixer LAST, to avoid speaker damage due to the noise. When turning the power off, the mixer should be turned OFF FIRST for the same reason.

- Protective circuit (poly switch)
All full-range loudspeakers are fitted with a self-resetting poly switch that protects the high-frequency driver from damage caused by excessive power. If a loudspeaker cabinet loses high-frequency output, immediately remove power from the unit and wait for two to three minutes. This should be long enough to allow the poly switch to reset. Reapply power and check the performance of the highfrequency driver before continuing, with the power reduced to a level that does not cause the poly switch to interrupt the signal.

- Do not connect any other mixer than the STAGEPAS400i mixer to the dedicated speakers(MODEL 400S), doing so may cause emitting smoke and may damage the speakers.

- Do not use the device in a confined, poorly-ventilated location. Make sure that there is adequate space between the mixer, or the speaker fitted with the mixer, and surrounding walls or other devices: at least 30cm at the sides, 30cm behind and 30cm above. Inadequate ventilation can result in overheating, possibly causing damage to the device(s), or even fire.
- If you lay the speaker flat on its side or like a stage monitor, make sure to remove the mixer first.
- Do not hold the bottom of the speaker when transporting or moving it. In doing so, you may pinch your hands under the speaker, and result in injury.
- Do not place the device in a location where it may come into contact with corrosive gases or salt air. Doing so may result in malfunction.
- Before moving the device, remove all connected cables.
- When setting up the mixer, make sure that the AC outlet you are using is easily accessible. If some trouble or malfunction occurs, immediately turn off the power switch and disconnect the plug from the outlet. Even when the power switch is turned off, electricity is still flowing to the product at the minimum level. When you are not using the product for a long time, make sure to unplug the power cord from the wall AC outlet.

Connections

- Before connecting the device to other devices, turn off the power for all devices. Before turning the power on or off for all devices, set all volume levels to minimum.
- For the SPEAKERS jacks of the mixer, use only the included MODEL 400S speakers and speaker cables. Use of other types of speakers and cables may result in damage, or even fire.

Maintenance

- Remove the power plug from the AC outlet when cleaning the device.

Handling caution

- Do not insert your fingers or hands in any gaps or openings on the vents or panel of the mixer and the ports of the speaker.
- Avoid inserting or dropping foreign objects (paper, plastic, metal, etc.) into any gaps or openings on the vents or panel of the mixer and the ports of the speaker. If this happens, turn off the power immediately and unplug the power cord from the AC outlet. Then have the device inspected by qualified Yamaha service personnel.
- Do not rest your weight on the device or place heavy objects on it, and avoid use excessive force on the buttons, switches or connectors.
- Do not use the speakers for a long period of time at a high or uncomfortable volume level, since this can cause permanent hearing loss. If you experience any hearing loss or ringing in the ears, consult a physician.
- Do not operate the device if the sound is distorting. Prolonged use in this condition could cause overheating and result in fire.
- Do not pull on any attached cable, such that of a microphone. Doing so may cause the speaker to topple, and result in damage or in injury.

Yamaha cannot be held responsible for damage caused by improper use or modifications to the device, or data that is lost or destroyed.

ADDRESS LIST

- NORTH AMERICA**
CANADA
Yamaha Canada Music Ltd.
135 Milner Avenue, Toronto, Ontario, M1S 3R1, Canada
Tel: +1-416-296-1311
U.S.A.
Yamaha Corporation of America
6600 Orangeforte Avenue, Buena Park, CA 90620, U.S.A.
Tel: +1-714-522-9011
- CENTRAL & SOUTH AMERICA**
MEXICO
Yamaha de Mexico, S.A. de C.V.
Av. Insurgentes Sur 1647 Piso 9º, Col. San José Insurgentes, Delegación Benito Juárez, Mexico, D.F., C.P. 03900
Tel: +52-55-5804-0600
BRAZIL
Yamaha Musical do Brasil Ltda.
Rua Filadelfo Ramos, 302 - Cj 52 e 54 - Torre B - Vila Olimpia - CEP 04511-010 - São Paulo/SP, Brazil
Tel: +55-11-3704-1377
ARGENTINA
Yamaha Music Latin America, S.A., Sucursal Argentina
Olga Costantini 1533, Piso 4 Norte, Madern Este <1107CEC, Buenos Aires, Argentina
Tel: +54-11-4119-7000
VENEZUELA
Yamaha Musical de Venezuela, C.A.
Av. Manzanares, C.C. Manzanares Plaza, Piso 4, Oficina 0401, Baruta, Caracas, Venezuela
Tel: +58-212-941-1877
PANAMA AND OTHER LATIN AMERICAN COUNTRIES/
CARIBBEAN COUNTRIES/
Yamaha Music Latin America, S.A.
Edif. Torre Banco General, Piso 7, Urbanización Marbella, Calle 47 y Aquilino de la Guardia, Ciudad de Panamá, República de Panamá
Tel: +507-269-5311
- EUROPE**
THE UNITED KINGDOM/IRELAND
Yamaha Music Europe GmbH (UK)
Sherbourne Drive, Tibrook, Milton Keynes, MK7 3BL, U.K.
Tel: +44-1908-366700
GERMANY
Yamaha Music Europe GmbH
Siemensstrasse 22-34, 25462 Rellingen, Germany
Tel: +49-4101-3030
SWITZERLAND/LEICHTENSTEIN
Yamaha Music Europe GmbH, Röllingen, Switzerland in Zürich
Seefeldstrasse 94, 8008 Zürich, Switzerland
Tel: +41-43-8378080
AUSTRIA/BULGARIA
Yamaha Music Europe GmbH Branch Austria
Schleiergasse 20, 1100 Wien, Austria
Tel: +43-1-66023900
CZECH REPUBLIC/HUNGARY/
ROMANIA/SLOVAKIA/SLOVENIA
Yamaha Music Europe GmbH
Branch Austria
Schleiergasse 20, 1100 Wien, Austria
Tel: +43-1-66023900
POLAND/LITHUANIA/LATVIA/ESTONIA
Yamaha Music Europe GmbH
Sp. z o.o. Oddział w Polsce
ul. Wroclawska 14, 02-553 Warszawa, Poland
Tel: +48-22-880-08-88
- AFRICA**
Yamaha Music Gulf FZE
JAFZA-16, Office 512, P.O.Box 17328,
Jebel Ali FZE, Dubai, UAE
Tel: +971-4-801-1500
MIDDLE EAST
TURKEY
Yamaha Music Europe GmbH
Merkezi Almanya Türkiye İhtisali Subesi
Mısır Meydanı Sokak, Spring City Plaza Bagimsiz
Böl. No:3, Sarıyer İstanbul, Turkey
Tel: +90-212-999-8010
CYPRUS
Yamaha Music Europe GmbH
Siemensstrasse 22-34, 25462 Rellingen, Germany
Tel: +49-4101-3030
OTHER EUROPEAN COUNTRIES
Yamaha Music Europe GmbH
Siemensstrasse 22-34, 25462 Rellingen, Germany
Tel: +49-4101-3030
- ASIA**
MALTA
Olimpus Music Ltd.
Valletta Road, Mosta MST9010, Malta
Tel: +356-2132-2093
NETHERLANDS/BELGIUM/
LUXEMBOURG
Yamaha Music Europe Branch Benelux
Lansingstraat 5b, 4133 AB Vianen, The Netherlands
Tel: +31-347-358040
FRANCE
Yamaha Music Europe
7 rue Ambroise Croizat, Zone d'activités de Pariset,
77183 Crèssy-Beaubourg, France
Tel: +33-1-6461-4000
ITALY
Yamaha Music Europe GmbH, Branch Italia
Viale Italia 88, 20020, Lainate (Milano), Italy
Tel: +39-02-76135774
SPAIN/PORTUGAL
Yamaha Music Europe GmbH Iberica, Sucursal en España
Ctra. de la Corona km. 17,200, 28231
Las Rozas de Madrid, Spain
Tel: +34-91-639-86-88
GREECE
Philippou Naks S.A. The Music House
19th km. Leof. Athinon 190 02 Peania - Attiki, Greece
Tel: +30-210-6686-168
SWEDEN/FINLAND/ICELAND
Yamaha Music Europe GmbH Germany filial Scandinavia
JA Wettergrensgata 1, 400 43 Göteborg, Sweden
Tel: +46-31-489-34-00
DENMARK
Yamaha Music Denmark,
Filial of Yamaha Music Europe GmbH, Tyskland
Genestevej 8C, ST. TH., 2860 Soborg, Denmark
Tel: +45-44-02-45-40
NORWAY
Yamaha Music Europe GmbH Norway -
Norwegian Branch
Orni Nøringspark 7, 1323 Østera, Germany
Tel: +47-2716-7800
RUSSIA
Yamaha Music (Russia) LLC.
Room 37, entrance 7, bld. 7, Kievskaya street,
Moscow, 121059, Russia
Tel: +7-495-626-5005
OTHER COUNTRIES
Yamaha Music (Russia) LLC.
Room 37, entrance 7, bld. 7, Kievskaya street,
Moscow, 121059, Russia
Tel: +7-495-626-5005
- ASIA**
THE PEOPLE'S REPUBLIC OF CHINA
Yamaha Music & Electronics (China) Co., Ltd.
2F, Yunhezhong, 1818 Xinzhonglu, Jingtan-city,
Shanghai, China
Tel: +86-400-6051-7700
INDIA
Yamaha Music India Private Limited
Spratledge Building, Ground Floor, Tower A,
Sector-7, Gurgaon, Sohna Road, Gurgaon-122002,
Haryana, India
Tel: +91-124-485-3300
INDONESIA
PT. Yamaha Musik Indonesia (Distributor)
Yamaha Music Center Bldg. Jalan Jend. Gatot
Subroto Kav. 4, Jakarta 12930, Indonesia
Tel: +62-21-520-2577
KOREA
Yamaha Music Korea Ltd.
8F, Dongsang Bldg. 21, Teheran-ro 87-gil,
Gangnam-gu, Seoul, 155-880, Korea
Tel: +82-2-3467-3300
MALAYSIA
Yamaha Music (Malaysia) Sdn. Bhd.
No.8, Jalan Perbandaran, Kelana Jaya, 47001
Petaling Jaya, Selangor, Malaysia
Tel: +60-3-78039000
SINGAPORE
Yamaha Music (Asia) Private Limited
Block 202 Hougang Street 21, #02-00,
Singapore 530202, Singapore
Tel: +65-67469-9200
TAIWAN
Yamaha Music & Electronics Taiwan Co., Ltd.
2F, No.1, Yuanfong Rd. Banqiao Dist.
New Taipei City 22063, Taiwan, R.O.C.
Tel: +886-2-7741-8888
THAILAND
Siam Music Yamaha Co., Ltd.
3, 4, 15, 16th Fl., Siam Motors Building,
891/1 Rama I Road, Wangmai,
Pathumwan, Bangkok 10330, Thailand
Tel: +66-2-215-2622
VIETNAM
Yamaha Music Vietnam Company Limited
15th Floor, Nam A Bank Tower, 201-203 Cach
Mang Thang Tam St., Ward 4, Dist.3,
Ho Chi Minh City, Vietnam
Tel: +84-8-3818-1122
OTHER ASIAN COUNTRIES
Yamaha Corporation
Sales & Marketing Division
10-1, Nakazawa-cho, Nakaku, Hamamatsu,
Japan 430-8650
Tel: +81-53-460-2312
OCEANIA
AUSTRALIA
Yamaha Music Australia Pty. Ltd.
Level 1, 99 Queensbridge Street, Southbank,
VIC 3006, Australia
Tel: +61-3-9093-6111
COUNTRIES AND TRUST
TERRITORIES IN PACIFIC OCEAN/
Yamaha Corporation
Sales & Marketing Division
10-1, Nakazawa-cho, Nakaku, Hamamatsu,
Japan 430-8650
Tel: +81-53-460-2312

PRECAUTIONS

PLEASE READ CAREFULLY BEFORE PROCEEDING
* Please keep this manual in a safe place for future reference.

WARNING